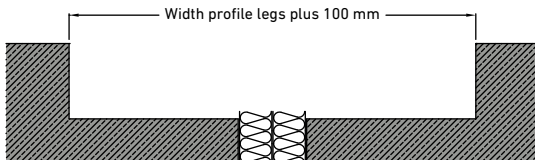
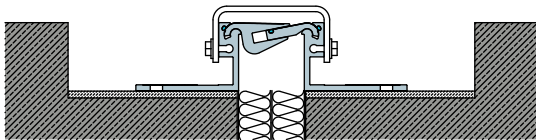


INSTALLATION STEPS FSX-EXPANSION JOINTS USING THE EXAMPLE OF THE FSX 75

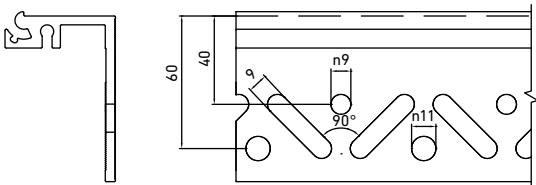
- 1** Cleaning and priming of the load bearing ground.



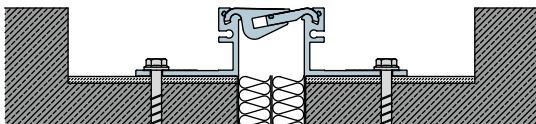
- 3** Cleaning, degreasing und priming - if necessary - of joint cover mounting brackets and levelling of the joint cover at the correct height into the still soft smoothing material. Pls adjust the thickness to the upper surface of the finished floor and coating - if applicable.



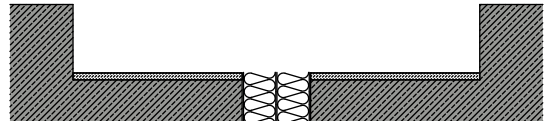
- 5** Mounting kann be effected through the holes or slots. Pls choose the furthest possible distance to the cover edge. When using compound anchors, the outer bor-hole is to be used.



- 7** Remove spacers immediately after dowelling of the covers.

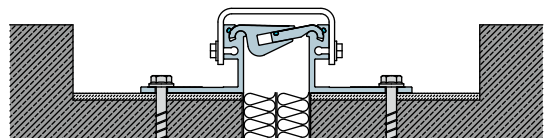


- 2** Application of leveling layer with a pressure-resistant mortar that does not shrink (e.g. PCC or epoxy resin mortar)

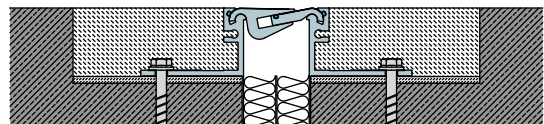


- 4** The joint covers have to be fully lined with no hollows. Pls make sure that mortar does not break into the joint while pushing in the joint covers. If necessary, let the joint cover filler plates protrude. Start with the moulded parts. Mounting brackets must not extend into the joint. Several joint cover lengths are to be linked with connection pins at the same level. Pls pay attention to the same optical alignment (arrows) of assymetric joint covers.

- 6** Double-sided anchoring immediately after the mortar has hardened with Heco MMS-plus SS 10x90 vz (or an alternativ anchor from our standard mouting list publishe on our website) with a 300 mm gap. When using countersunk screws, the holes in the mounting brackets must be countersunk, too.



- 8** Filling the cut-out to the expansion joint cover. Fill the joint gap up to the level of the upper surface minus possible coating. While choosing the appropriate filling material, please pay attention to the subsequent application. In any case, pls ensure that the upper edge of the neighboring surface has the same height as the upper edge of the cover.



Given that qualitatively equivalent results are achieved otherwise, it is permitted to deviate from the described procedures. For more information please visit migua.com