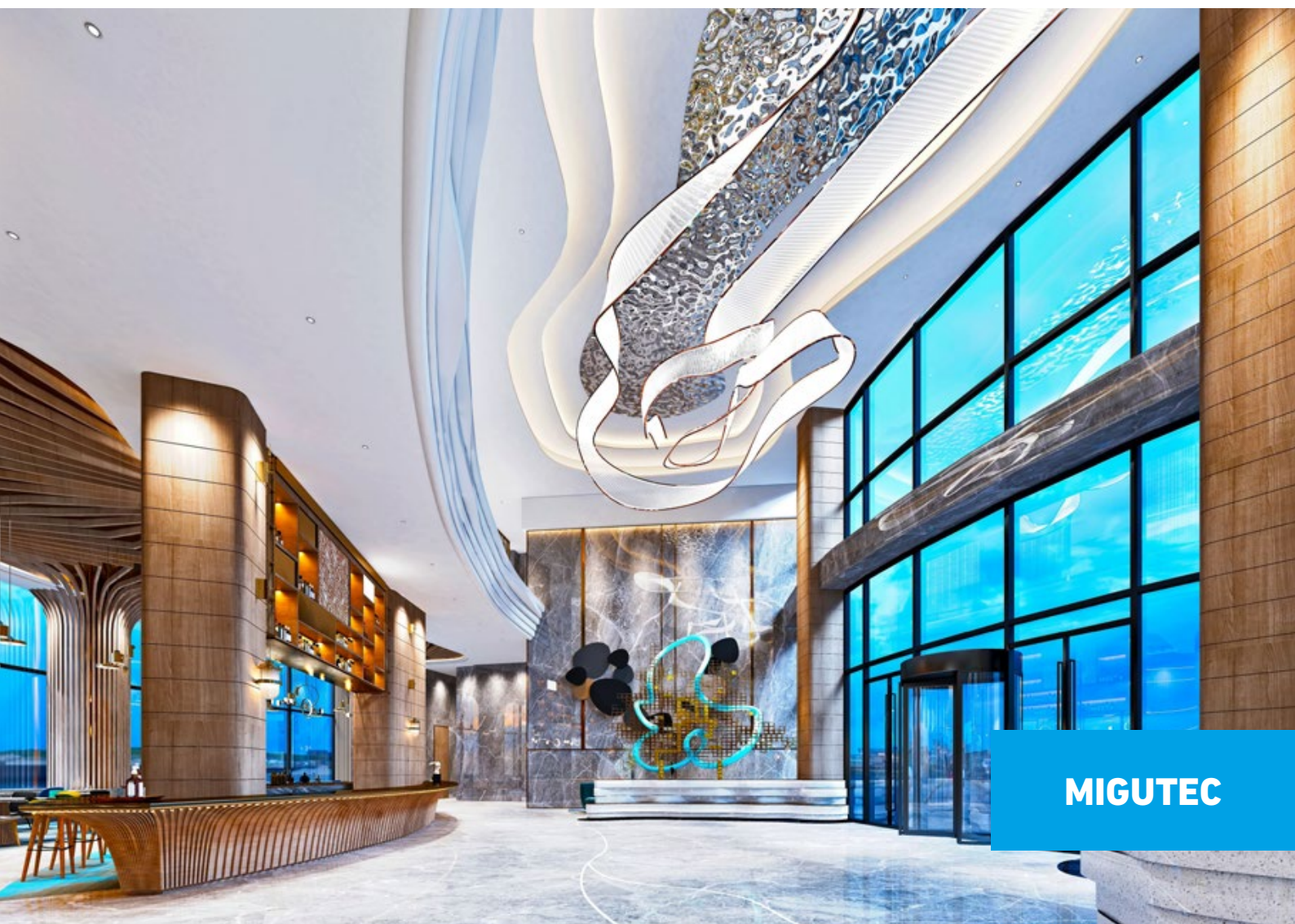
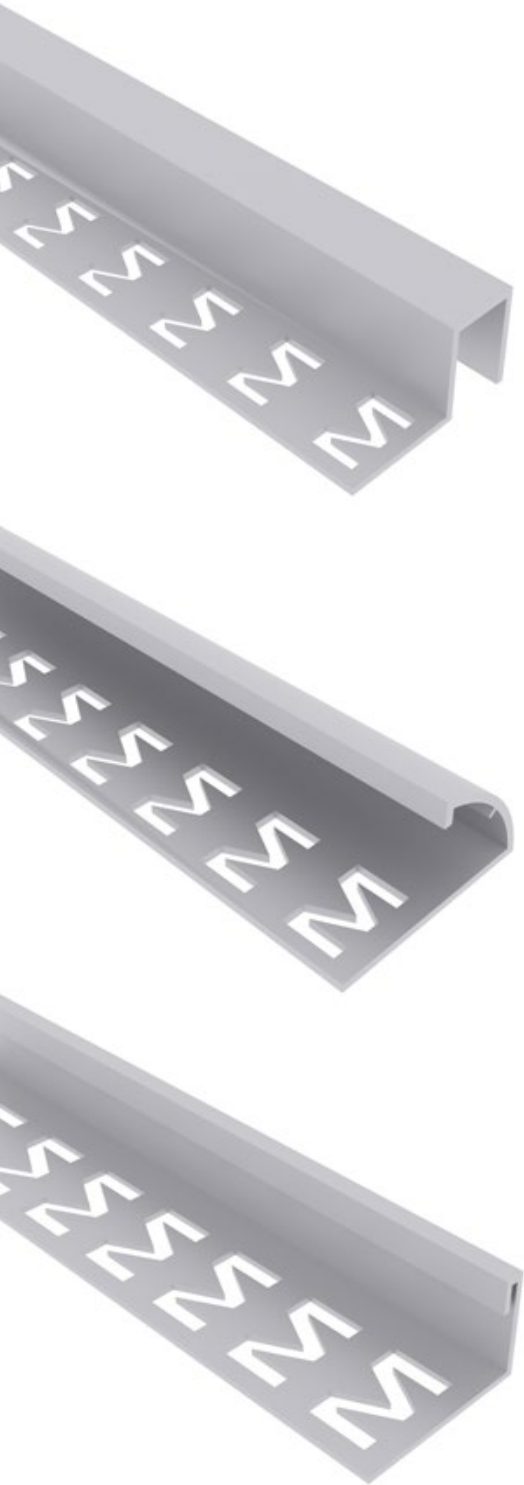


TILE TRIMS AND PROFILES

FOR FLOORS AND WALLS



YOU FIRST.



MIGUA is one of Europe's leading experts in the design, manufacture and installation of expansion joint systems. MIGUA expansion joint systems serve to cover, close and seal expansion joints. Our products satisfy the most rigorous standards in quality and safety and are widely used in large-scale construction projects such as airports, train stations, industrial plants, parking structures, shopping centres and hospitals. Every day, our experienced team do their utmost to make your building project successful. We are not satisfied until you are satisfied. Because our guiding principle is: **MIGUA – you first.**

Over 600 products for one purpose: Yours.

With five brands and over 600 proven expansion joint systems, we've got the diverse structural needs of today's construction projects covered. We confront problems such as heavy traffic loads and meet exacting standards in water resistance or hygiene. Floors, walls or roofs, MIGUA offers the perfect solution for any surface. Products of the highest quality are fundamental to our business; yet our ultimate priority is always customer satisfaction. We offer you a wide range of services to make your building project successful: Starting with competent advice, followed by technical application support on site up to the complete installation service. And since we know that the requirements for expansion joints are just as individual as the buildings themselves, we gladly develop your own very special joint cover system solution based on your requirements. And that is what we call our MIGUA 360° Service.

MIGUTEK

INTERIOR JOINT SYSTEMS
FOR FLOORS, WALLS
AND CEILINGS

MIGUTRANS

HEAVY-DUTY ALL-METAL
JOINT SOLUTIONS FOR
LARGE TRAFFIC LOADS

MIGUTAN

WATERTIGHT EXPANSION
JOINT SOLUTIONS

MIGUPREN

WATERTIGHT SEALING STRIPS
FOR JOINTS IN LANDSCAPES,
ROOFS AND VIADUCTS

MIGUMAX

SEISMIC JOINT SYSTEMS

MIGUMATS

MIGUA DOOR MATS

360°

MIGUA 360° SERVICE

TABLE OF CONTENTS

Introducing MIGUTEK	4
Innovations at MIGUA	5–7
Profiles for floors and walls	8–42
Stair nosings	43–49
Skirtings	50–53
Tile movement joints	54–61
Grooving channels	62–64
Landscape profiles	65
Legal notes	67

WITH MIGUTEC TRIMS, MIGUA OFFERS A COMPREHENSIVE RANGE OF **SYSTEMS FOR TRIMS AND PROFILES.**

Our MIGUTEC range covers a proper selection of tile trims and profiles for simple applications which also have high architectural requirements.

MIGUA trims and profiles are made from a high-quality aluminium alloy, stainless steel and PVC in order to offer you durable trims for floors and walls.

In addition, some of our trims and profiles also are made customized in order offering a solution suitable for the project requirements.





MIGUARCHITECT.COM THE MODULAR PLANNING SYSTEM IN WEB PAGE FORMAT

With the website miguarchitect.com, MIGUA now offers an innovative work aid especially for architects and planners. This bespoke website was developed in the form of a working tool that contains information relevant only to planning. In addition

to tender texts and BIM files, the site also offers cleverly prepared basic know-how on the subject of planning with joints.

Miguarchitect.com was awarded the German Innovation Award 2019.



SETTING NEW STANDARDS ALSO IN DESIGN



There is much more to MIGUA expansion joint covers than their high quality and impressive functionality. The newly developed 'Generation X' MIGUTRANS joint covers also meet high design standards in building architecture. The distinctive stylistic vocabulary the smooth surface design is indicative of this. This special structure ensures a

harmonious appearance with the new expansion joint covers - they are all marked with an X behind the joint cover designation. Equally innovative is the beautifully designed MIGUA Befestigungsmatrix® (fastening matrix), which allows for a well thought-out, flexible positioning of the screws and thus easier installation.

EFFICIENT PLANNING OF JOINTS WITH BIM

MIGUA is the first expansion joint cover manufacturer in Germany to support architects and planners in the efficient planning of joints using BIM objects. And that involves everything from the early design phase to the concrete execution.

This means that even in the early planning phase (service phase 3), when hardly any exact information is available about the joint cover required in the future – such as joint width, required

movement absorption and load – initial planning can be carried out very easily with a basic file, the so-called MIGUA BIM Basic. Once detailed requirements for the expansion joint cover are known (service phase 5), the planner can complete his work with the concrete BIM object without any additional effort.

BIM objects are currently available for the watertight (MIGUTAN) and full metal expansion joint cover systems (MIGUTRANS).

INNOVATIVE AND SUSTAINABLE SOLUTION FOR REFURBISHMENT AND MODERNISATION

With the FSRX, MIGUA has developed a joint cover that can be replaced quickly, easily and in a cost-effective manner during operation. With this replaceable full metal joint cover, only the visible, most heavily loaded part of the joint cover is unscrewed and replaced by a new one. Time-consuming dismantling and removal of the adjacent floor covering is no longer necessary with this design. Above all, the clear advantage and added value for investors here is the reduced downtime of

the respective areas, in addition to the time saved and the minimised wage and material costs resulting from it.

In addition, the joint cover contributes to sustainability, as far less material is required for the renovation / modernisation with regard to the joint cover itself and the floor covering.

The FSRX was honored with the German Innovation Award and was granted the European and US patent.



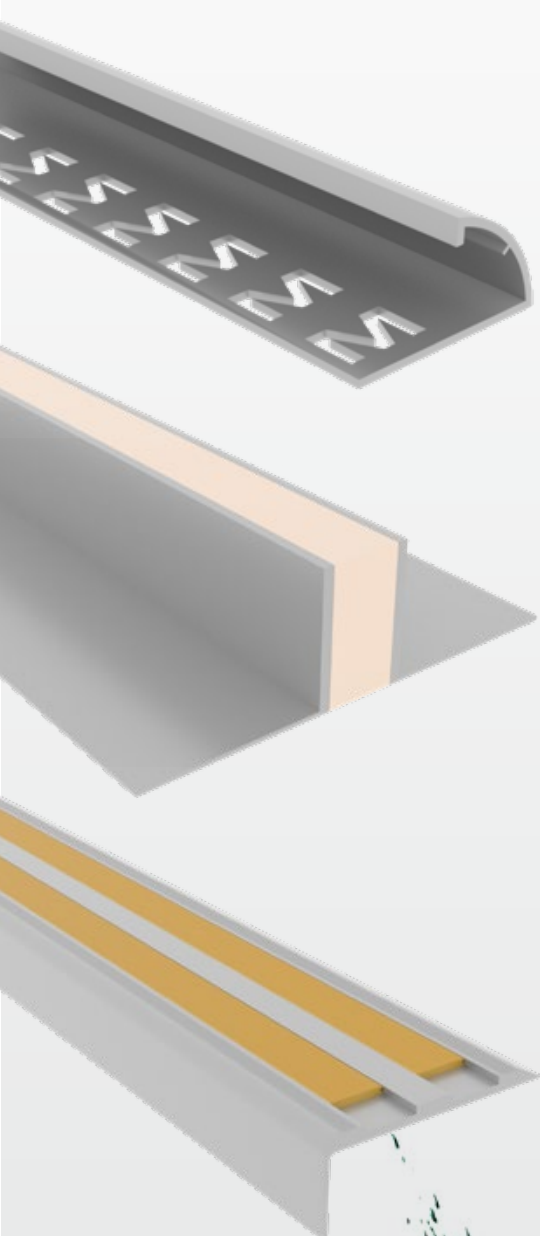
**GERMAN
INNOVATION
AWARD '19
WINNER**

TILE TRIMS AND PROFILES

AVAILABLE IN A WIDE RANGE OF COLORS

MIGUTEC Trims and profiles can be integrated into your projects in a variety of color shades. This allows you more freedom of design when using trims and profi-

les. Depending on the model, you have a different choice of colors. This gives you the opportunity to define homogeneous surfaces. For a perfect finish.



Color ranges

The following colors are available depending on the model. The actual color may differ from the illustration. We will be happy to provide you with a sample for approval.














Aluminium color range

 Matt Silver	 Polished Silver	 Champ Brush
 Bronze Matt	 Bronze Matt	 Matt Black
 Polish Bronze	 Polish Gold	 Matt Gold

Stainless steel color range

 Bronze	 Rose Gold	 Champagne Gold
--	--	--

PVC color range

 M Black - 1101	 M Grey - 1301	 M Grey - 2302
 M Grey - 5365	 M Grey - 5305	 M Grey - 9369
 M White - 2512	 M Grey - 6366	 M Beige - 1971
 M Beige - 5975	 M Beige - 6954	 M Beige - 11011
 M Beige - 1901		

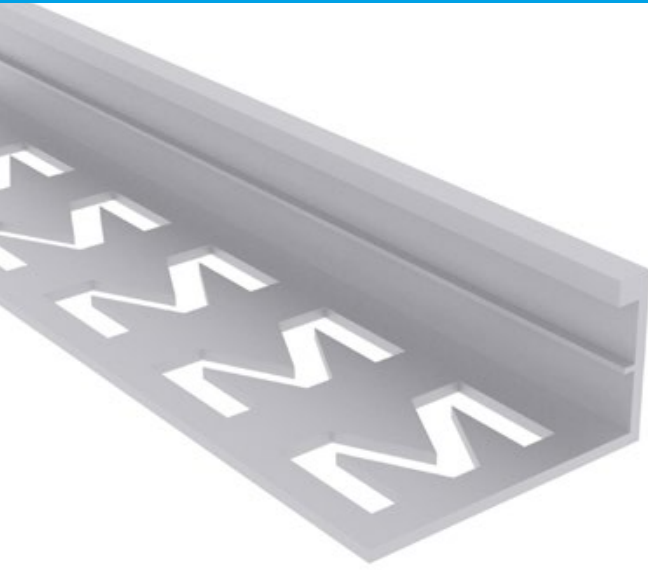


MTLFA-3

PROFILES FOR FLOORS AND WALLS

MIGUTEC

TRIMS AND PROFILES



- 1 Trim for floors
- 2 Highly durable
- 3 Easy to install

Standard version	Height h [mm]	Visible Width vw [mm]	Standard Length l [meter]
MTLFA-3-8	8	3	2.7
MTLFA-3-10	10	3	2.7
MTLFA-3-12.5	12.5	3	2.7
MTLFA-3-15	15	3	2.7

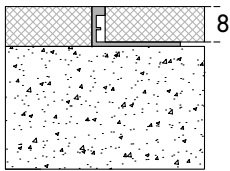
Material Options

- Extruded Aluminum

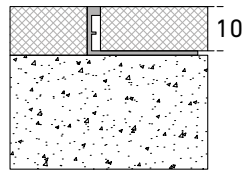
Finish Options

- Colored anodized
- Powder coat

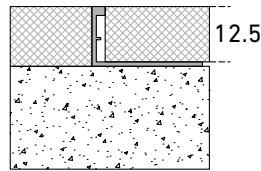
L Shape



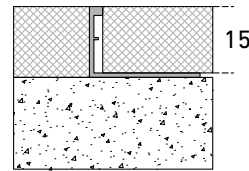
MTLUFA-3-8



MTLUFA-3-10



MTLUFA-3-12

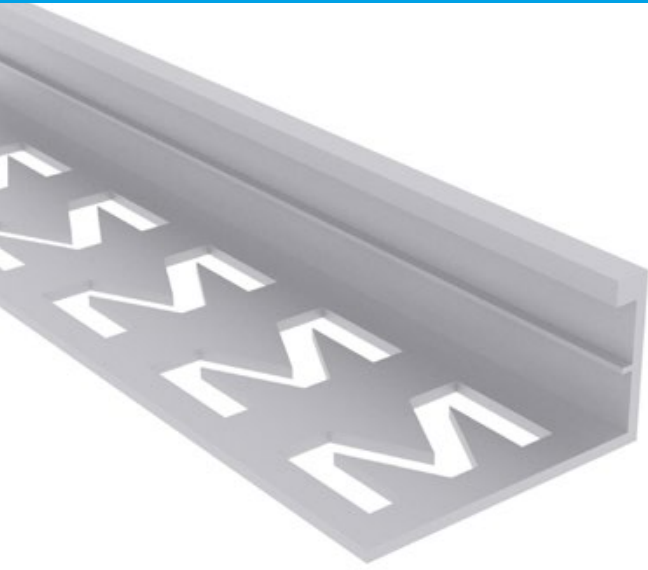


MTLUFA-3-15

Standard color range

- | | | | | |
|--|---|---|---|---|
|  Matt Silver |  Polished Silver |  Champ Brush |  Bronze Matt |  Bronze Matt |
|  Matt Black |  Polish Bronze |  Polish Gold |  Matt Gold | |

Actual finish might vary from the illustration. If required, colour sample will be provided for approval.



- 1 Trim for walls
- 2 Highly durable
- 3 Easy to install

Standard version	Height h [mm]	Visible Width vw [mm]	Standard Length l [meter]
MTLWA-3-8	8	3	2.7
MTLWA-3-10	10	3	2.7
MTLWA-3-12.5	12.5	3	2.7
MTLWA-3-15	15	3	2.7

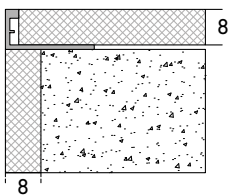
Material Options

- Extruded Aluminum

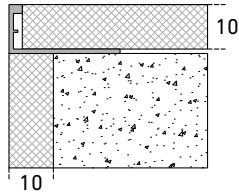
Finish Options

- Colored anodized
- Powder coat

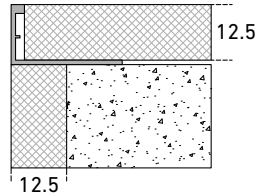
L Shape



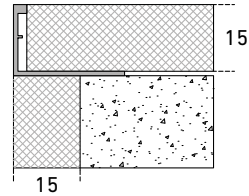
MTLWA-3-8



MTLWA-3-10



MTLWA-3-12.5

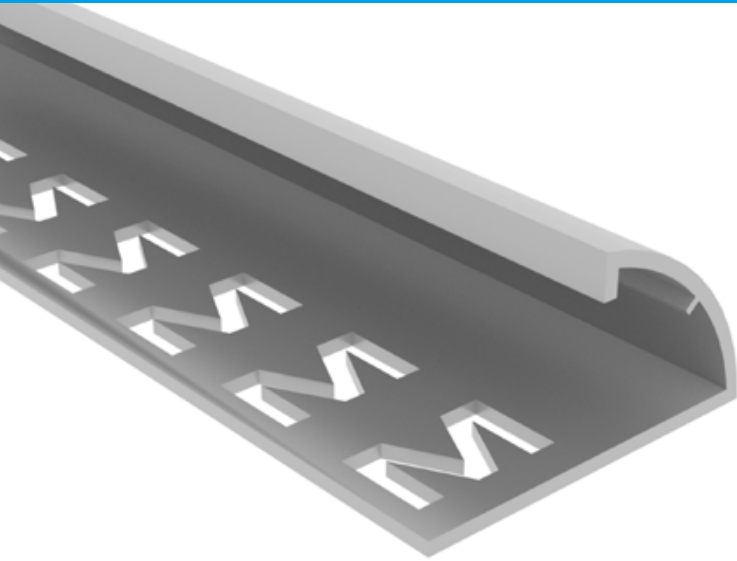


MTLWA-3-15

Standard color range

- Matt Silver
- Polished Silver
- Champ Brush
- Bronze Matt
- Bronze Matt
- Matt Black
- Polish Bronze
- Polish Gold
- Matt Gold

Actual finish might vary from the illustration. If required, colour sample will be provided for approval.



- 1 Trim for walls
- 2 Highly durable
- 3 Easy to install

Standard version	Height h [mm]	Visible Width vw [mm]	Standard Length l [meter]
MTRWA-8	8	3	2.7
MTRWA-10	10	3	2.7
MTRWA-12.5	12.5	3	2.7

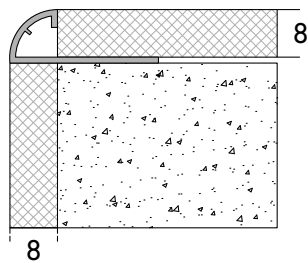
Material Options

- Extruded Aluminum

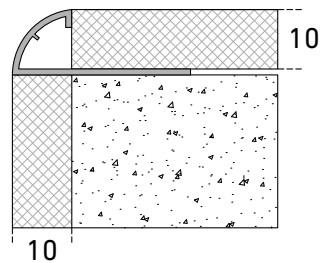
Finish Options

- Colored anodized
- Powder coat

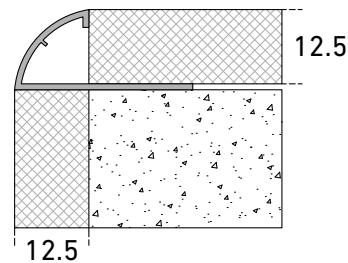
Round Shape



MTRWA-8



MTRWA-10

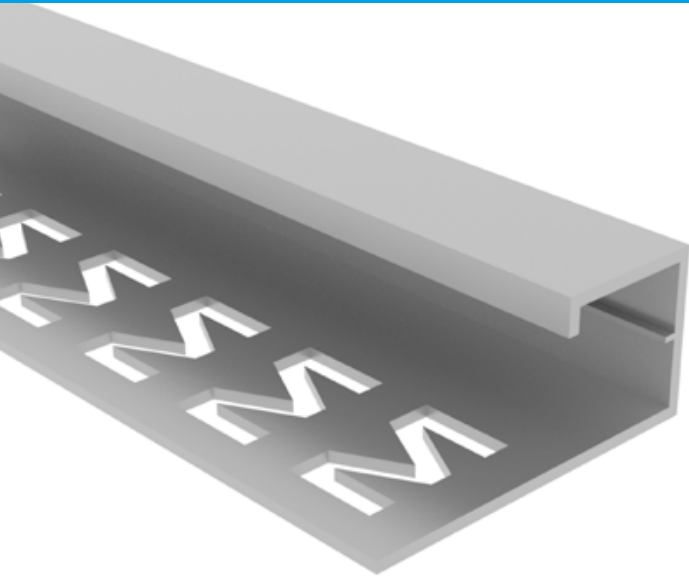


MTRWA-12.5

Standard color range

- Matt Silver
- Polished Silver
- Champ Brush
- Bronze Matt
- Bronze Matt
- Matt Black
- Polish Bronze
- Polish Gold
- Matt Gold

Actual finish might vary from the illustration. If required, colour sample will be provided for approval.



- 1 Trim for walls
- 2 Highly durable
- 3 Easy to install

Standard version	Height h [mm]	Visible Width vw [mm]	Standard Length l [meter]
MTSWA-8	8	8	2.7
MTSWA-10	10	10	2.7
MTSWA-12.5	12.5	12.5	2.7

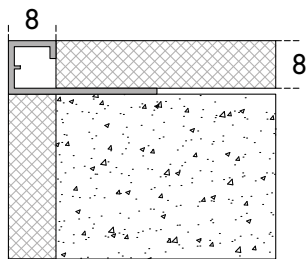
Material Options

- Extruded Aluminum

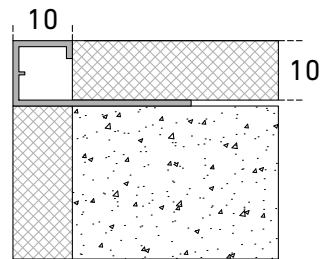
Finish Options

- Colored anodized
- Powder coat

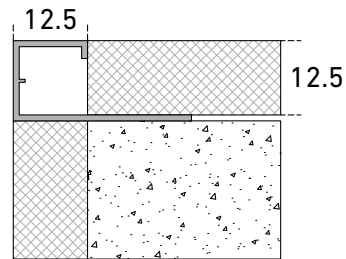
Square Shape



MTSWA-8



MTSWA-10

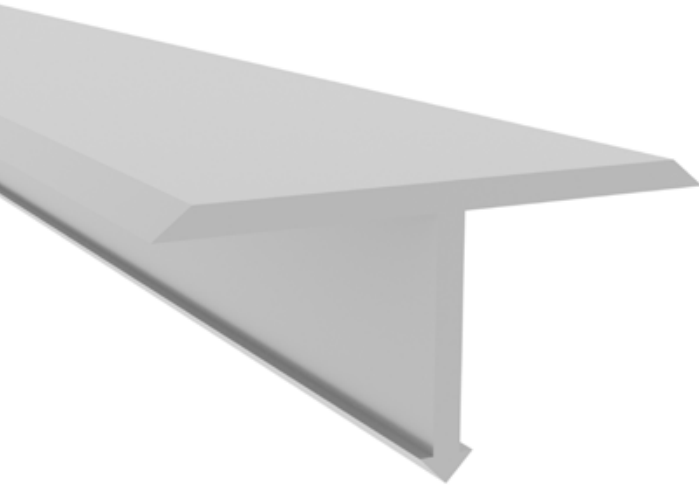


MTSWA-12.5

Standard color range

- Matt Silver
- Polished Silver
- Champ Brush
- Bronze Matt
- Bronze Matt
- Matt Black
- Polish Bronze
- Polish Gold
- Matt Gold

Actual finish might vary from the illustration. If required, colour sample will be provided for approval.



- 1 Trim for floors
- 2 Highly durable
- 3 Easy to install

Standard version	Height h [mm]	Visible Width vw [mm]	Standard Length l [meter]
MTTFA-20-10	10	20	2.7
MTTFA-25-10	10	25	2.7

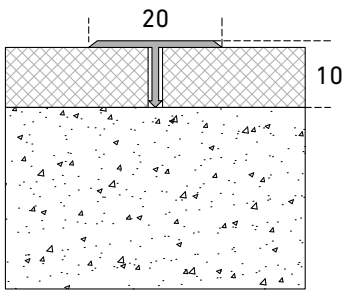
Material Options

- Extruded Aluminum

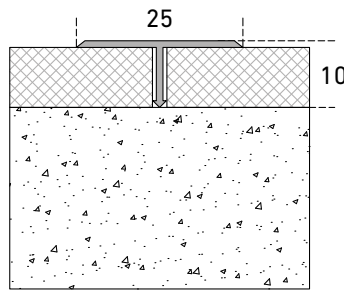
Finish Options

- Colored anodized
- Powder coat

T Shape



MTTFA-20-10

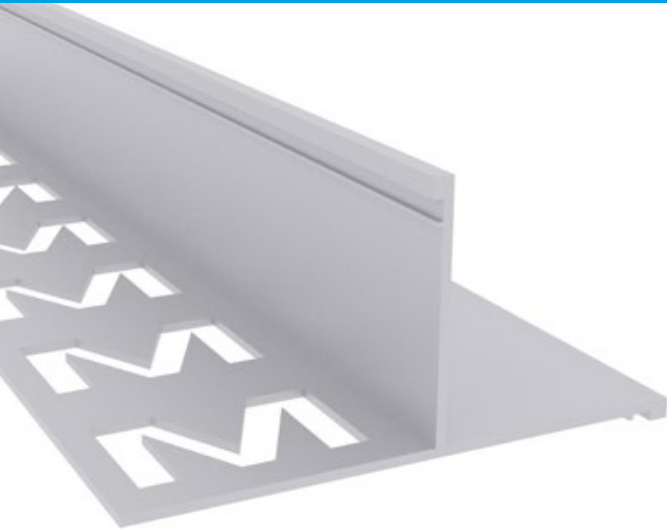


MTTFA-25-10

Standard color range

- Matt Silver
- Polished Silver
- Champ Brush
- Bronze Matt
- Bronze Matt
- Matt Black
- Polish Bronze
- Polish Gold
- Matt Gold

Actual finish might vary from the illustration. If required, colour sample will be provided for approval.



- 1 Trim for walls
- 2 Highly durable
- 3 Easy to install

Standard version	Height h [mm]	Standard Length l [meter]
MTVWA-8	8	2.7
MTVWA-10	10	2.7
MTVWA-12.5	12.5	2.7

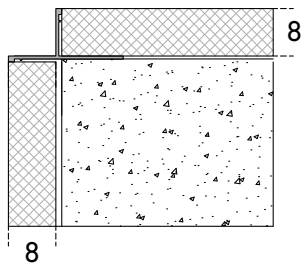
Material Options

- Extruded Aluminum

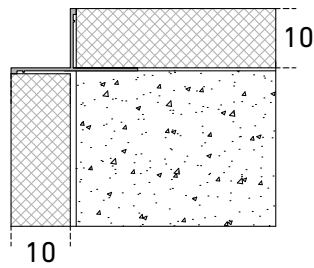
Finish Options

- Colored anodized
- Powder coat

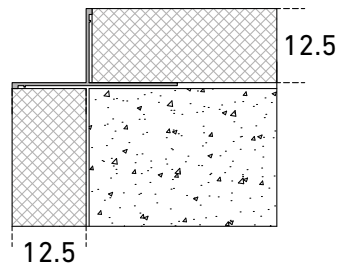
V Shape



MTVWA-8



MTVWA-10

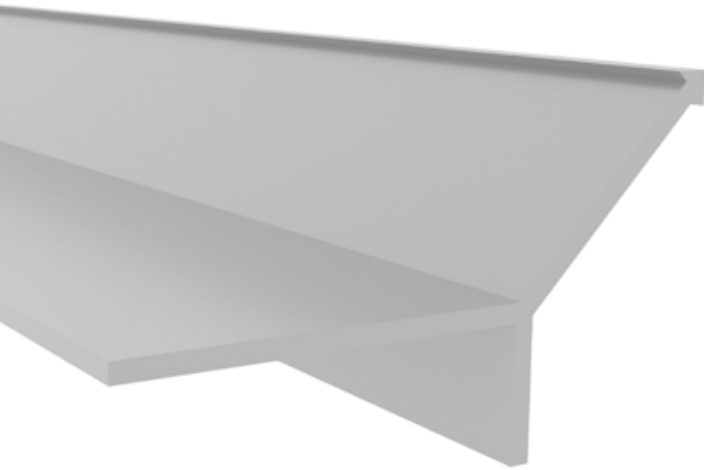


MTVWA-12.5

Standard color range

- Matt Silver
- Polished Silver
- Champ Brush
- Bronze Matt
- Matt Black
- Polish Bronze
- Polish Gold
- Matt Gold
- Bronze Matt

Actual finish might vary from the illustration. If required, colour sample will be provided for approval.



- 1 Trim for walls
- 2 Highly durable
- 3 Easy to install

Standard version	Height h [mm]	Standard Length l [meter]
MTYWA-8	8	2.7
MTYWA-10	10	2.7
MTYWA-12.5	12.5	2.7

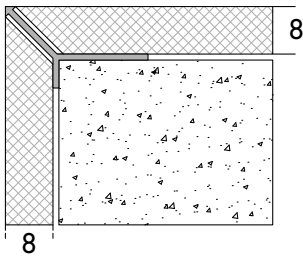
Material Options

- Extruded Aluminum

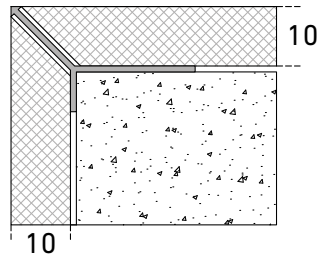
Finish Options

- Colored anodized
- Powder coat

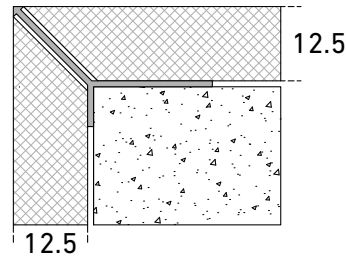
Y Shape



MTYWA-8



MTYWA-10

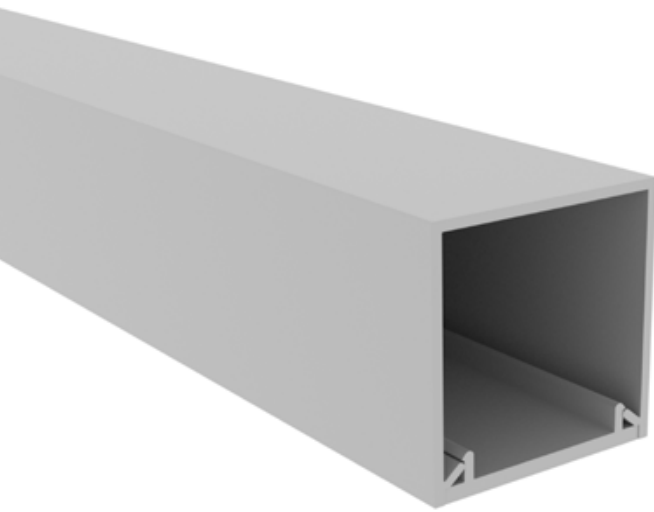


MTYWA-12.5

Standard color range

- Matt Silver
- Polished Silver
- Champ Brush
- Bronze Matt
- Bronze Matt
- Matt Black
- Polish Bronze
- Polish Gold
- Matt Gold

Actual finish might vary from the illustration. If required, colour sample will be provided for approval.



- 1 **Highly durable**
- 2 **Invisible fixing**
- 3 **Easy to install**

Standard version	Height h [mm]	Visible Width vw [mm]	Standard Length l [meter]
MTBWA-50-50	50	50	3

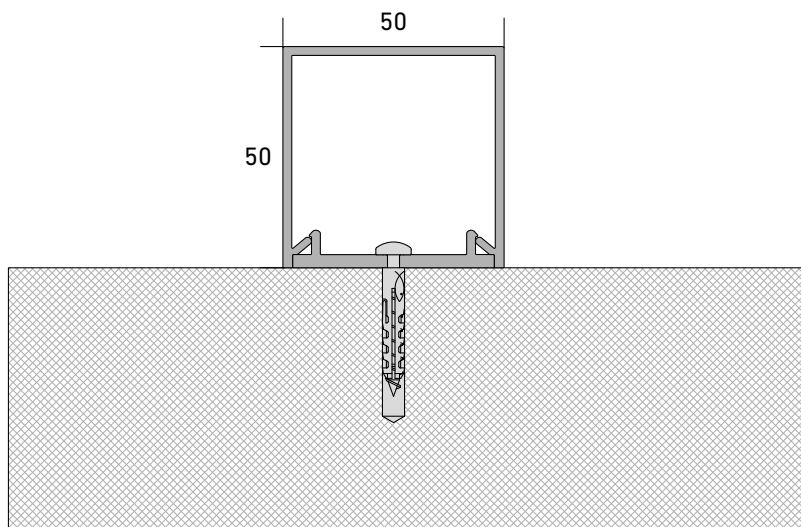
Material Options

- Extruded Aluminum

Finish Options

- Colored anodized
- Powder coat

Box Shape

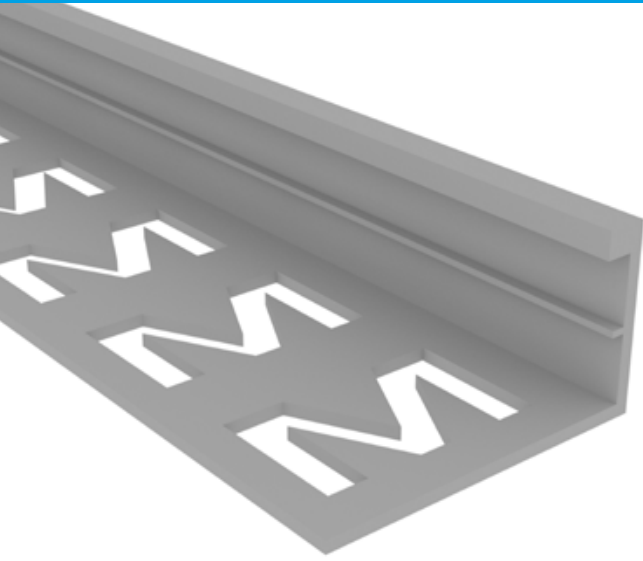


MTBWA-50-50

Standard color range

- Matt Silver
- Polished Silver
- Champ Brush
- Bronze Matt
- Bronze Matt
- Matt Black
- Polish Bronze
- Polish Gold
- Matt Gold

Actual finish might vary from the illustration. If required, colour sample will be provided for approval.



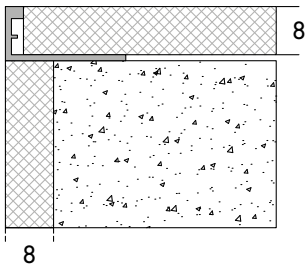
- 1 Trim for walls
- 2 Highly durable
- 3 Easy to install

Standard version	Height h [mm]	Visible Width vw [mm]	Standard Length l [meter]
MTLWP-3-8	8	3	2.7
MTLWP-3-10	10	3	2.7
MTLWP-3-12.5	12.5	3	2.7

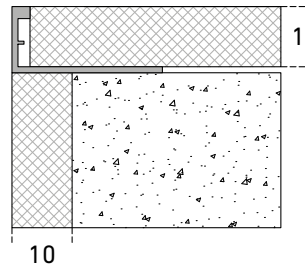
Material Options

- PVC Tile Trims

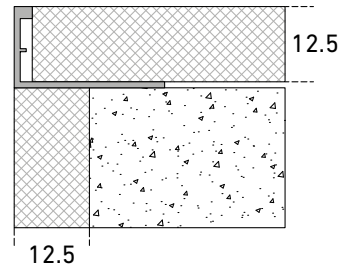
L Shape



MTLWP-3-8



MTLWP-3-10

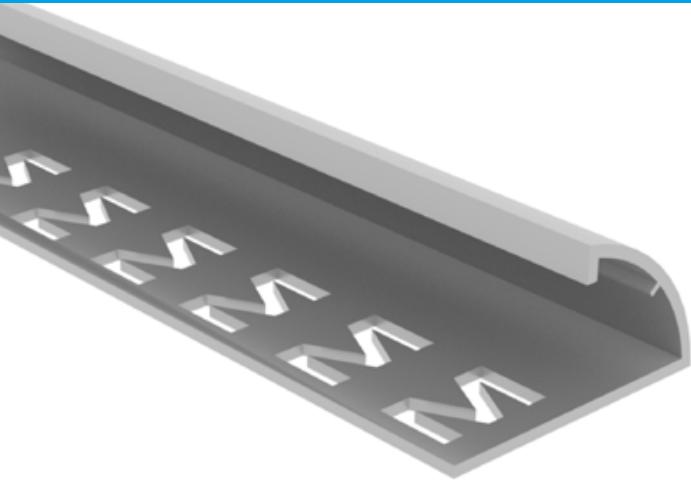


MTLWP-3-12.5

Standard color range

- | | | | | |
|----------------|-----------------|----------------|----------------|----------------|
| M Black - 1101 | M Grey - 1301 | M Grey - 2302 | M Grey - 5365 | M Grey - 5305 |
| M Grey - 9369 | M White - 2512 | M Grey - 6366 | M Beige - 1971 | M Beige - 5975 |
| M Beige - 6954 | M Beige - 11011 | M Beige - 1901 | | |

Actual finish might vary from the illustration. If required, colour sample will be provided for approval.



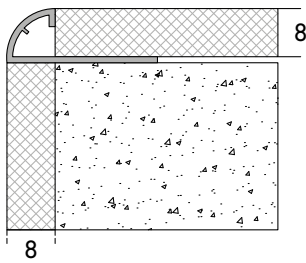
- 1 Trim for walls
- 2 Highly durable
- 3 Easy to install

Standard version	Height h [mm]	Standard Length l [meter]
MTRWP-8	8	2.7
MTRWP-10	10	2.7
MTRWP-12.5	12.5	2.7

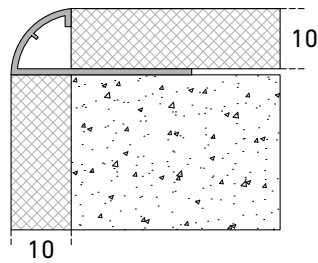
Material Options

- PVC Tile Trims

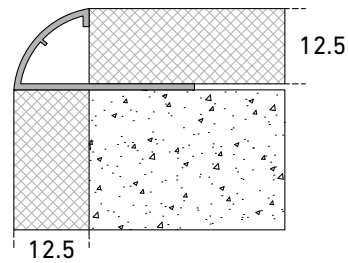
Round Shape



MTRWP-8



MTRWP-10

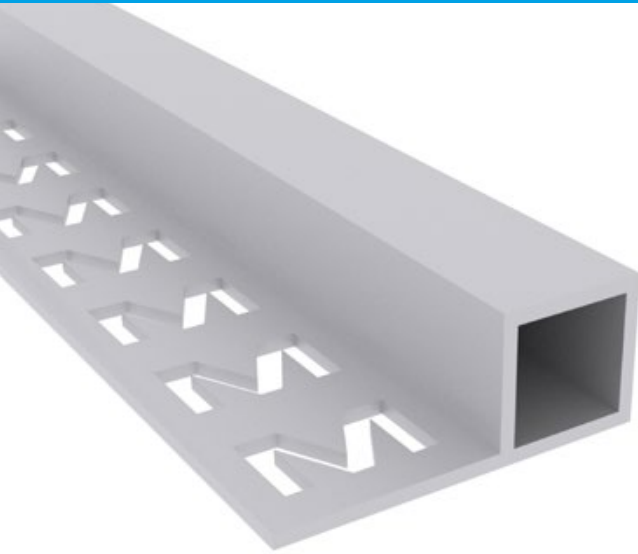


MTRWP-12.5

Standard color range

- M Black - 1101
- M Grey - 1301
- M Grey - 2302
- M Grey - 5365
- M Grey - 5305
- M Grey - 9369
- M White - 2512
- M Grey - 6366
- M Beige - 1971
- M Beige - 5975
- M Beige - 6954
- M Beige - 11011
- M Beige - 1901

Actual finish might vary from the illustration. If required, colour sample will be provided for approval.



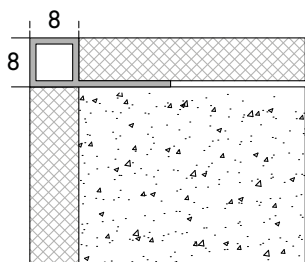
- 1 Trim for walls
- 2 Highly durable
- 3 Easy to install

Standard version	Height h [mm]	Visible Width vw [mm]	Standard Length l [meter]
MTSWP-8-8	8	8	2.7
MTSWP-10-10	10	10	2.7
MTSWP-12.5-12.5	12.5	12.5	2.7

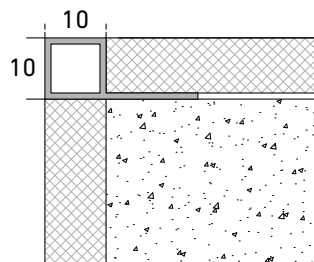
Material Options

- PVC Tile Trims

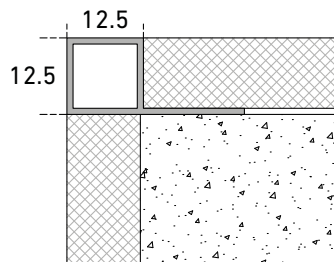
Square Shape



MTSWP-8-8



MTSWP-10-10

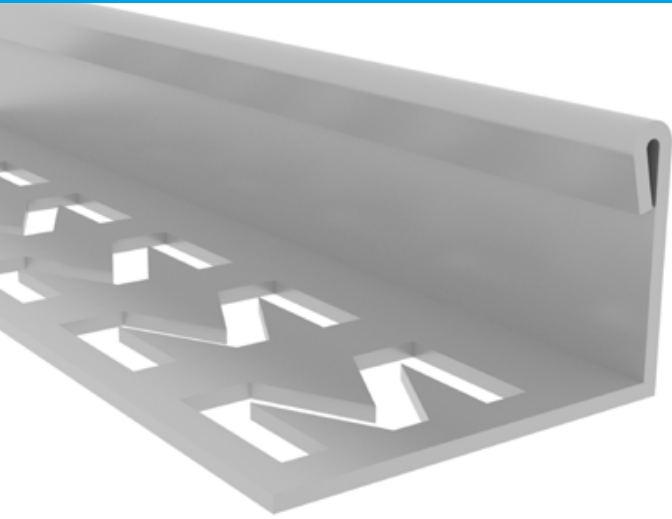


MTSWP-12.5-12.5

Standard color range

- M Black - 1101
- M Grey - 1301
- M Grey - 2302
- M Grey - 5365
- M Grey - 5305
- M Grey - 9369
- M White - 2512
- M Grey - 6366
- M Beige - 1971
- M Beige - 5975
- M Beige - 6954
- M Beige - 11011
- M Beige - 1901

Actual finish might vary from the illustration. If required, colour sample will be provided for approval.



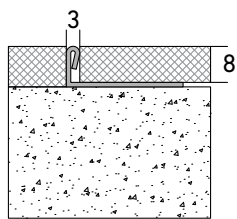
- 1 Trim for floors
- 2 Available in Stainless Steel 304, 316 and 316L finishes
- 3 Easy to install

Standard version	Height h [mm]	Visible Width vw [mm]	Standard Length l [meter]
MTLFS-3-8	8	3	2.7
MTLFS-3-10	10	3	2.7
MTLFS-3-12.5	12.5	3	2.7
MTLFS-3-15	15	3	2.7
MTLFS-3-20	20	3	2.7
MTLFS-3-25	25	3	2.7
MTLFS-3-35	35	3	2.7
MTLFS-3-40	40	3	2.7

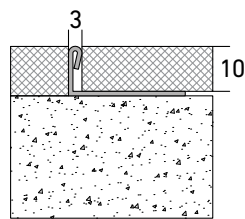
Material Options

- Stainless Steel 304 Brushed Finished
- Stainless Steel 304 Mirrored Finished
- Stainless Steel 316 Brushed Finished
- Stainless Steel 316 Mirrored Finished
- Stainless Steel 316L Brushed Finished
- Stainless Steel 316L Mirrored Finished

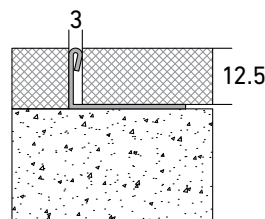
L Shape



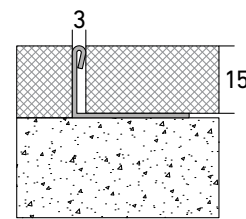
MTLFS-3-8



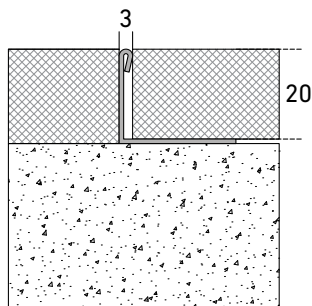
MTLFS-3-10



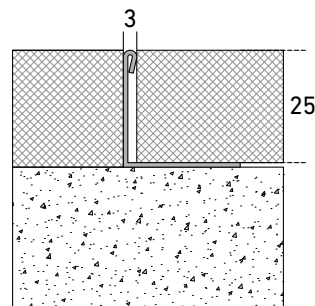
MTLFS-3-12.5



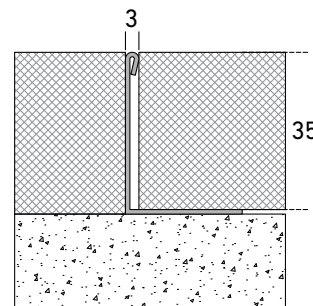
MTLFS-3-15



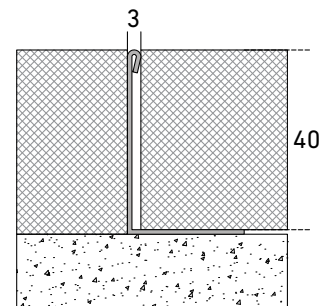
MTLFS-3-20



MTLFS-3-25



MTLFS-3-35

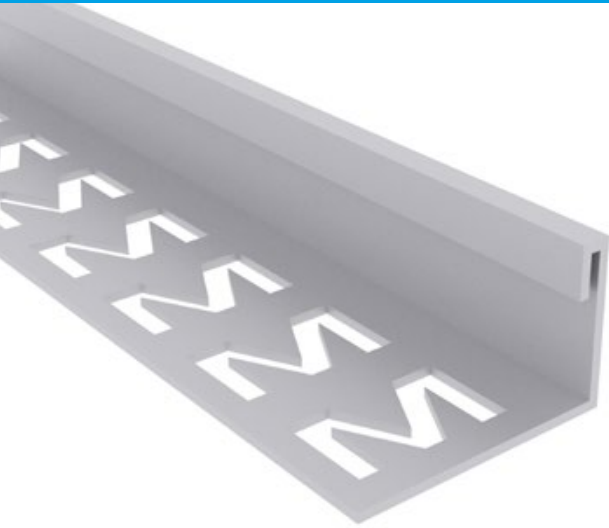


MTLFS-3-40

Standard color range

Bronze
 Rose Gold
 Champagne Gold

Actual finish might vary from the illustration. If required, colour sample will be provided for approval.



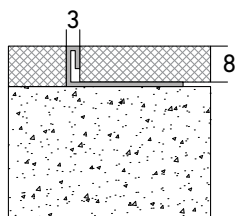
- 1 Trim for floors
- 2 Available in Stainless Steel 304, 316 and 316L finishes
- 3 Easy to install

Standard version	Height h [mm]	Visible Width vw [mm]	Standard Length l [meter]
MTLUFS-3-8	8	3	2.7
MTLUFS-3-10	10	3	2.7
MTLUFS-3-12	12	3	2.7
MTLUFS-3-15	15	3	2.7
MTLUFS-3-20	20	3	2.7
MTLUFS-3-25	25	3	2.7
MTLUFS-3-35	35	3	2.7
MTLUFS-3-40	40	3	2.7

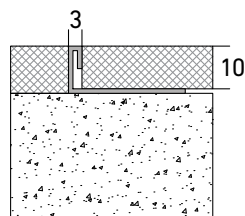
Material Options

- Stainless Steel 304 Brushed Finished
- Stainless Steel 304 Mirrored Finished
- Stainless Steel 316 Brushed Finished
- Stainless Steel 316 Mirrored Finished
- Stainless Steel 316L Brushed Finished
- Stainless Steel 316L Mirrored Finished

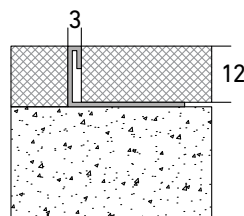
L Shape with 90 degree bend



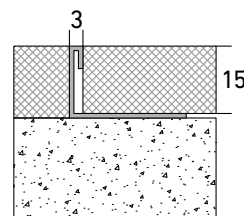
MTLUFS-3-8



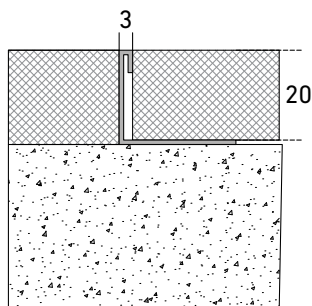
MTLUFS-3-10



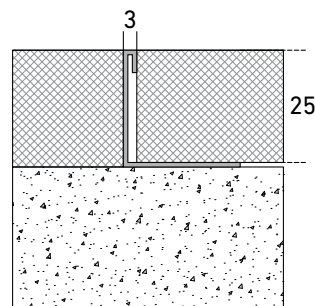
MTLUFS-3-12



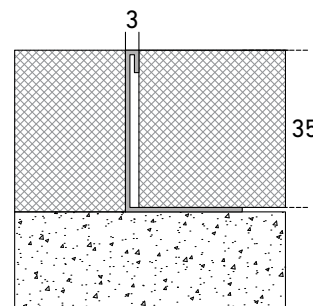
MTLUFS-3-15



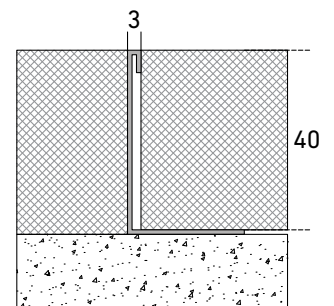
MTLUFS-3-20



MTLUFS-3-25



MTLUFS-3-35

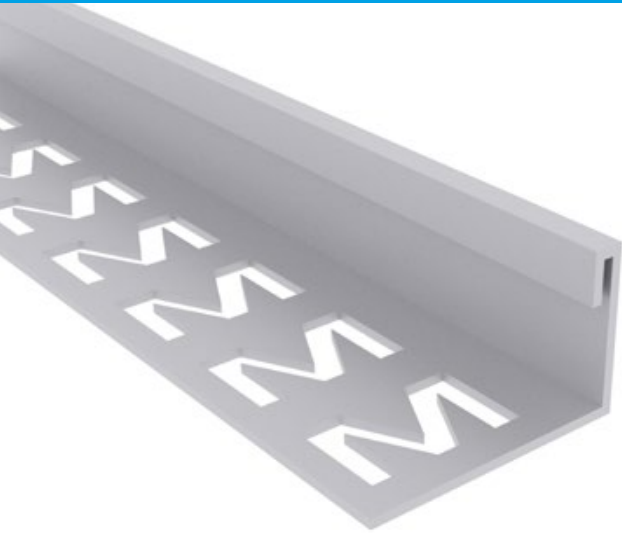


MTLUFS-3-40

Standard color range

Bronze
 Rose Gold
 Champagne Gold

Actual finish might vary from the illustration. If required, colour sample will be provided for approval.



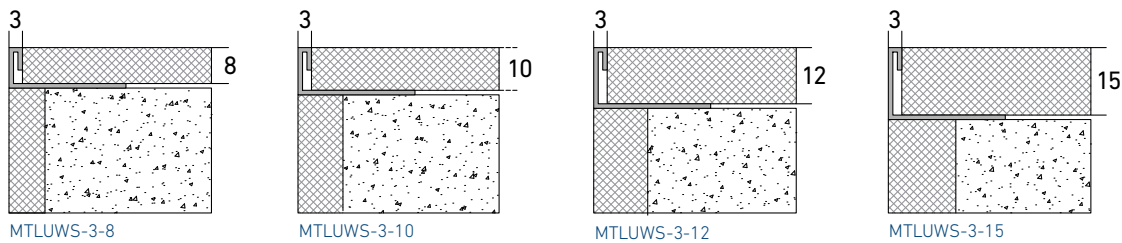
- 1 Trim for walls
- 2 Available in Stainless Steel 304, 316 and 316L finishes
- 3 Easy to install

Standard version	Height h [mm]	Visible Width vw [mm]	Standard Length l [meter]
MTLUWS-3-8	8	3	2.7
MTLUWS-3-10	10	3	2.7
MTLUWS-3-12	12	3	2.7
MTLUWS-3-15	15	3	2.7

Material Options

- Stainless Steel 304 Brushed Finished
- Stainless Steel 304 Mirrored Finished
- Stainless Steel 316 Brushed Finished
- Stainless Steel 316 Mirrored Finished
- Stainless Steel 316L Brushed Finished
- Stainless Steel 316L Mirrored Finished

L Shape



Standard color range

- Bronze
- Rose Gold
- Champagne Gold

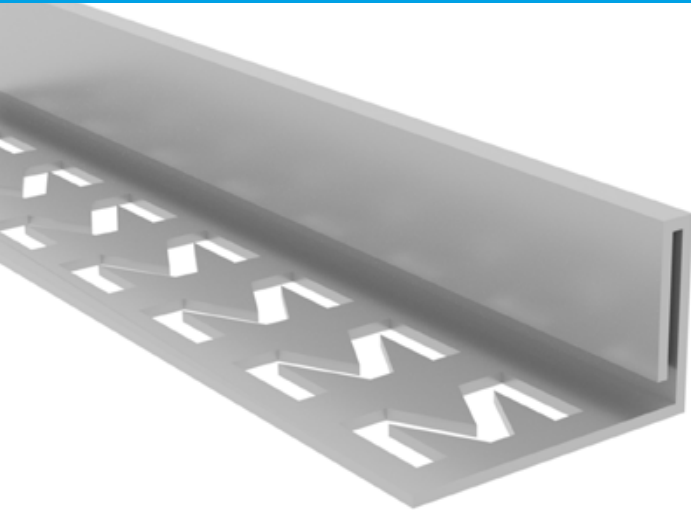
Actual finish might vary from the illustration. If required, colour sample will be provided for approval.

MTLUFS-E-3

PROFILES FOR FLOORS AND WALLS

MIGUTEC

TRIMS AND PROFILES



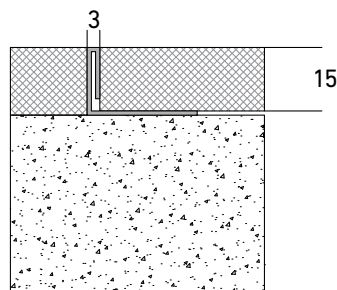
- 1 Trim for floors
- 2 Available in Stainless Steel 304, 316 and 316L finishes
- 3 Easy to install

Standard version	Height h [mm]	Visible Width vw [mm]	Standard Length l [meter]
MTLUFS-E-3-15	15	3	2.7
MTLUFS-E-3-25	25	3	2.7
MTLUFS-E-3-35	35	3	2.7

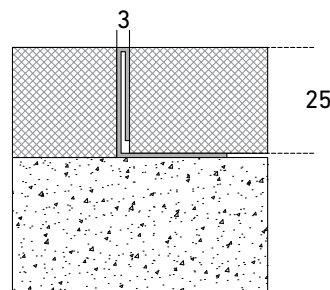
Material Options

- Stainless Steel 304 Brushed Finished
- Stainless Steel 304 Mirrored Finished
- Stainless Steel 316 Brushed Finished
- Stainless Steel 316 Mirrored Finished
- Stainless Steel 316L Brushed Finished
- Stainless Steel 316L Mirrored Finished

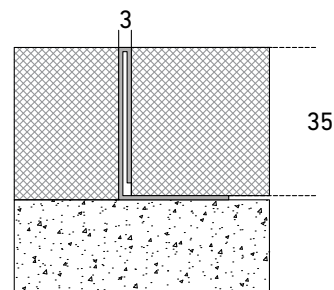
L Type with 90 degree & Long bend



MTLUFS-E-3-15



MTLUFS-E-3-25



MTLUFS-E-3-35

Standard color range

 Bronze  Rose Gold  Champagne Gold

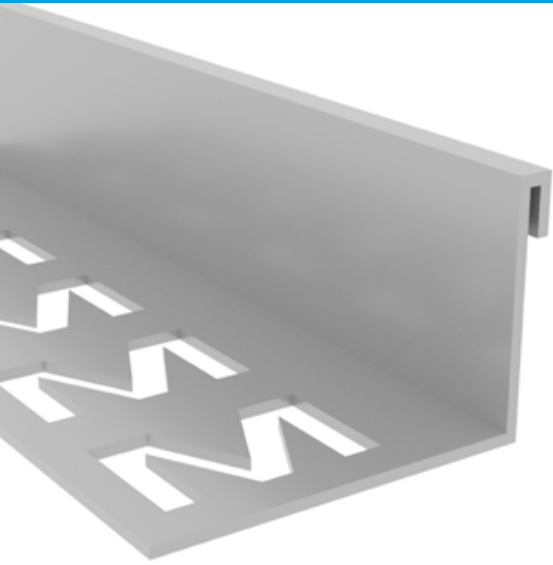
Actual finish might vary from the illustration. If required, colour sample will be provided for approval.

MTLUFS-I-3 (Inverted)

PROFILES FOR FLOORS AND WALLS

MIGUTEK

TRIMS AND PROFILES



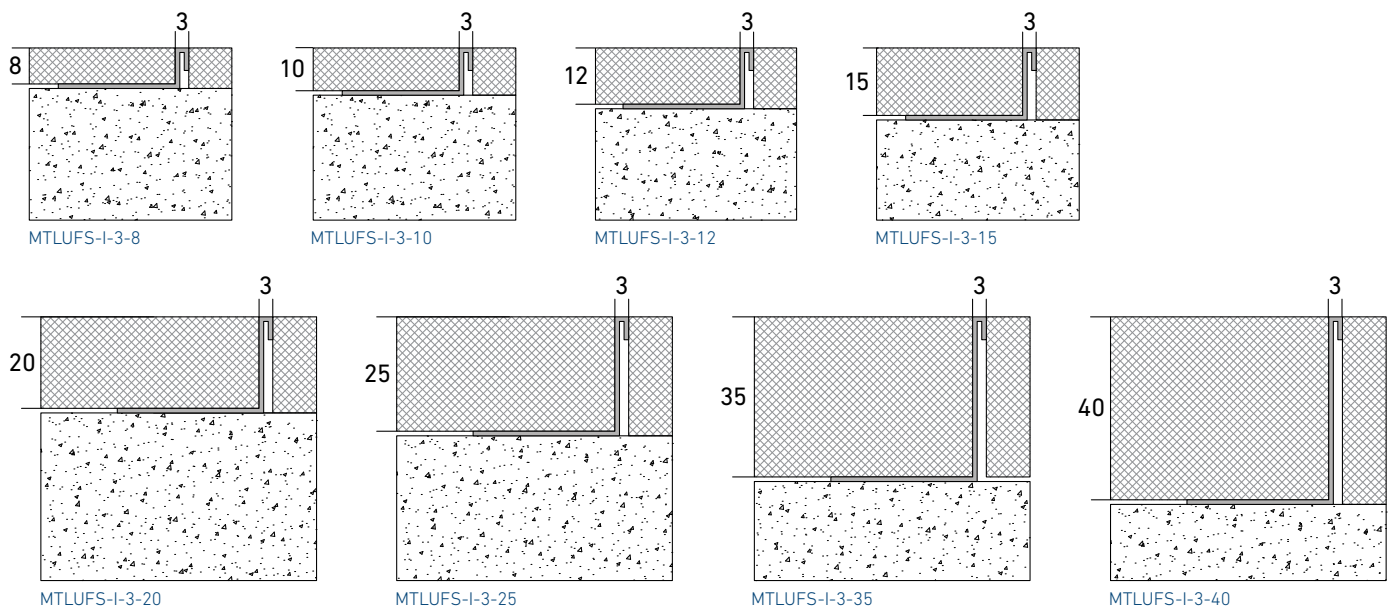
- 1 Trim for floors
- 2 Available in Stainless Steel 304, 316 and 316L finishes
- 3 Easy to install

Standard version	Height h [mm]	Visible Width vw [mm]	Standard Length l [meter]
MTLUFS-I-3-8	8	3	2.7
MTLUFS-I-3-10	10	3	2.7
MTLUFS-I-3-12	12	3	2.7
MTLUFS-I-3-15	15	3	2.7
MTLUFS-I-3-20	20	3	2.7
MTLUFS-I-3-25	25	3	2.7
MTLUFS-I-3-35	35	3	2.7
MTLUFS-I-3-40	40	3	2.7

Material Options

- Stainless Steel 304 Brushed Finished
- Stainless Steel 304 Mirrored Finished
- Stainless Steel 316 Brushed Finished
- Stainless Steel 316 Mirrored Finished
- Stainless Steel 316L Brushed Finished
- Stainless Steel 316L Mirrored Finished

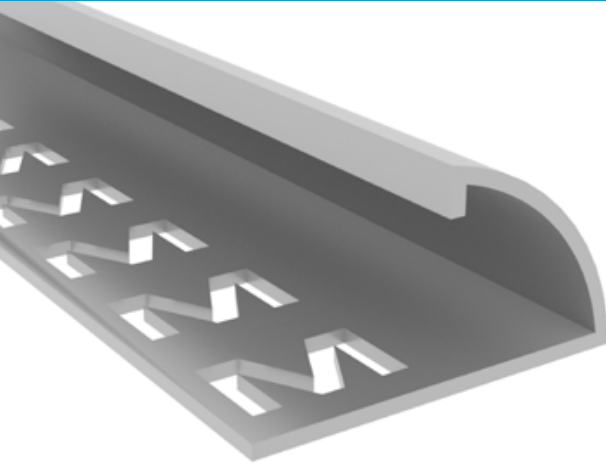
L Shape Inverted



Standard color range

- Bronze
- Rose Gold
- Champagne Gold

Actual finish might vary from the illustration. If required, colour sample will be provided for approval.



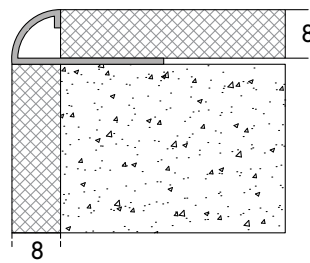
- 1 Trim for walls
- 2 Available in Stainless Steel 304, 316 and 316L finishes
- 3 Easy to install

Standard version	Height h [mm]	Visible Width vw [mm]	Standard Length l [meter]
MTRWS-8	8	8	2.7
MTRWS-10	10	10	2.7
MTRWS-12	12	12.5	2.7

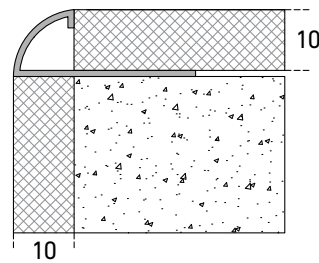
Material Options

- Stainless Steel 304 Brushed Finished
- Stainless Steel 304 Mirrored Finished
- Stainless Steel 316 Brushed Finished
- Stainless Steel 316 Mirrored Finished

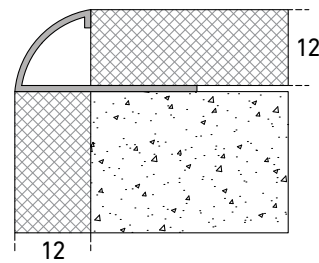
Round Shape



MTRWS-8



MTRWS-10

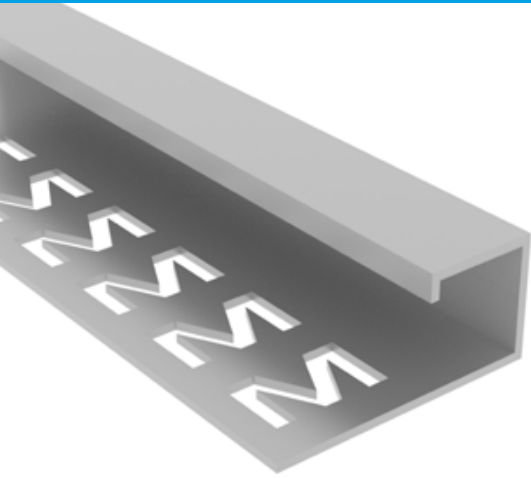


MTRWS-12

Standard color range

- Bronze
- Rose Gold
- Champagne Gold

Actual finish might vary from the illustration. If required, colour sample will be provided for approval.



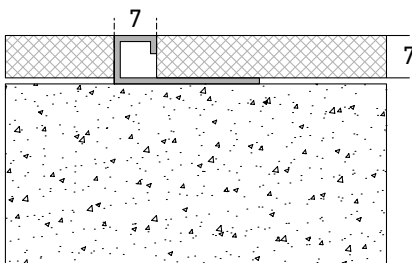
- 1 Trim for floors
- 2 Available in Stainless Steel 304, 316 and 316L finishes
- 3 Easy to install

Standard version	Height h [mm]	Visible Width vw [mm]	Standard Length l [meter]
MTSFS-7	7	7	2.7
MTSFS-8	8	8	2.7
MTSFS-9	9	9	2.7
MTSFS-10	10	10	2.7
MTSFS-12.5	12.5	12.5	2.7

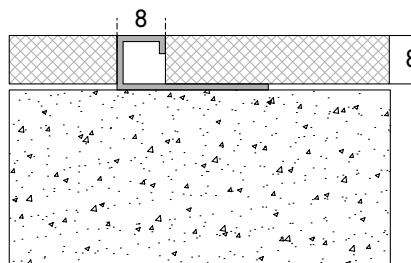
Material Options

- Stainless Steel 304 Brushed Finished
- Stainless Steel 304 Mirrored Finished
- Stainless Steel 316 Brushed Finished
- Stainless Steel 316 Mirrored Finished
- Stainless Steel 316L Brushed Finished
- Stainless Steel 316L Mirrored Finished

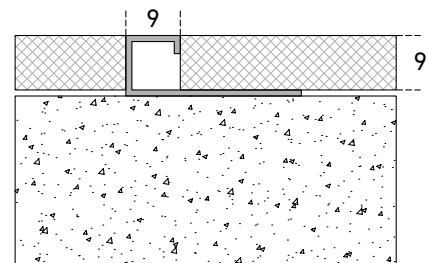
Square Shape



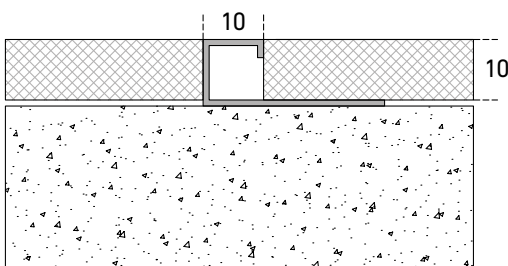
MTSFS-7



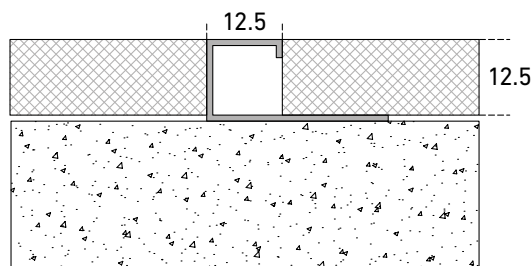
MTSFS-8



MTSFS-9



MTSFS-10

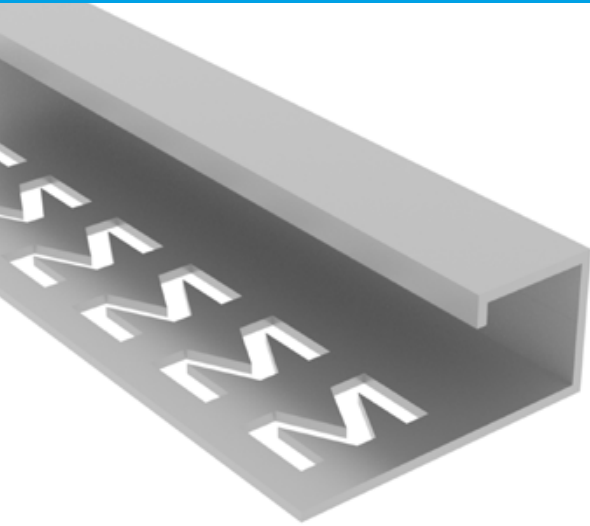


MTSFS-12.5

Standard color range

- Bronze
- Rose Gold
- Champagne Gold

Actual finish might vary from the illustration. If required, colour sample will be provided for approval.



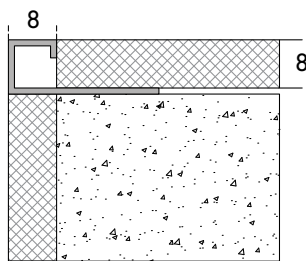
- 1 Trim for walls
- 2 Available in Stainless Steel 304, 316 and 316L finishes
- 3 Easy to install

Standard version	Height h [mm]	Visible Width vw [mm]	Standard Length l [meter]
MTSWS-8	8	8	2.7
MTSWS-10	10	10	2.7
MTSWS-12.5	12.5	12.5	2.7

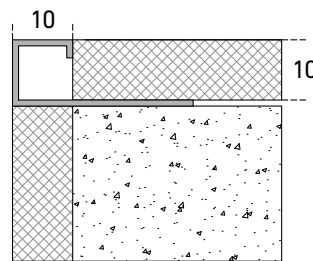
Material Options

- Stainless Steel 304 Brushed Finished
- Stainless Steel 304 Mirrored Finished
- Stainless Steel 316 Brushed Finished
- Stainless Steel 316 Mirrored Finished
- Stainless Steel 316L Brushed Finished
- Stainless Steel 316L Mirrored Finished

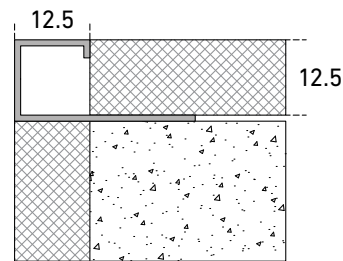
Square Shape



MTSWS-8



MTSWS-10

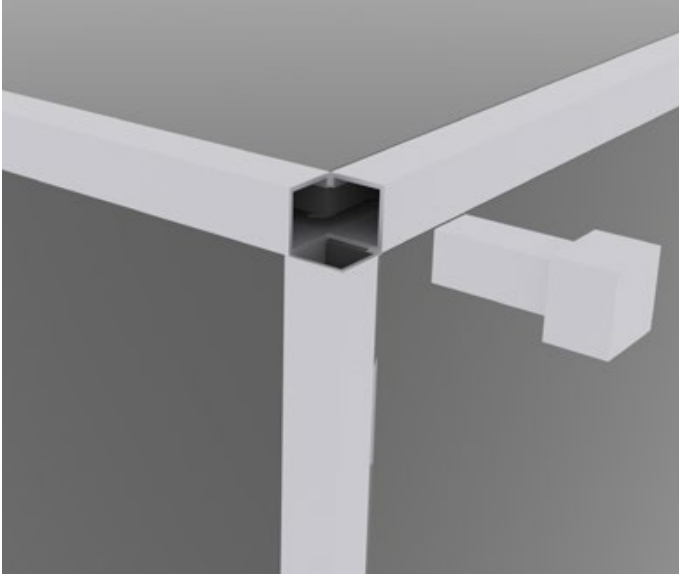


MTSWS-12.5

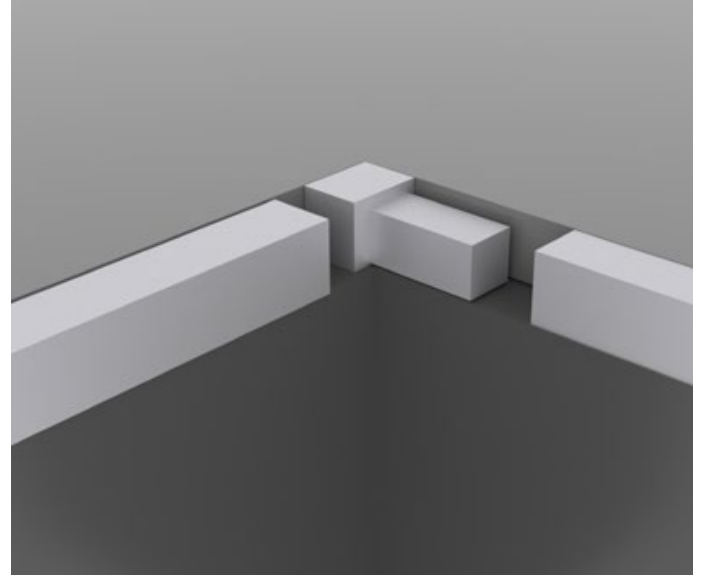
Standard color range

- Bronze
- Rose Gold
- Champagne Gold

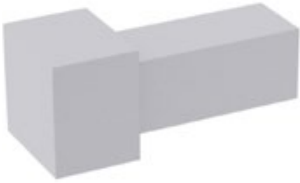
Actual finish might vary from the illustration. If required, colour sample will be provided for approval.



Outside Corner



Inside Corner



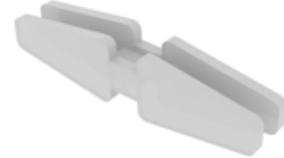
Capsule

MTSWS-7-CAP
MTSWS-8-CAP
MTSWS-9-CAP
MTSWS-10-CAP
MTSWS-12.5-CAP



End Cap

MTSWS-7-EC
MTSWS-8-EC
MTSWS-9-EC
MTSWS-10-EC
MTSWS-12.5-EC



Joint

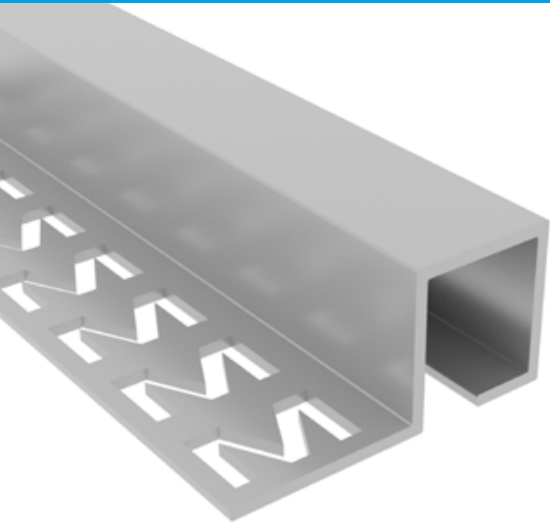
MTSWS-7-JO
MTSWS-8-JO
MTSWS-9-JO
MTSWS-10-JO
MTSWS-12.5-JO

MTPWS-12

PROFILES FOR FLOORS AND WALLS

MIGUTEK

TRIMS AND PROFILES



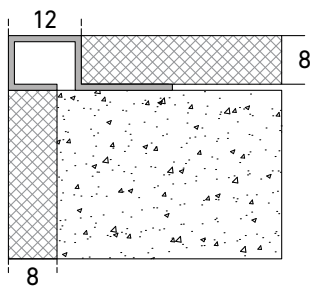
- 1 P shaped trim for walls
- 2 Available in Stainless Steel 304, 316 and 316L finishes
- 3 Easy to install

Standard version	Height h [mm]	Visible Width vw [mm]	Standard Length l [meter]
MTPWS-12-8	8	12	2.7
MTPWS-12-10	10	12	2.7
MTPWS-12-12	12	12	2.7

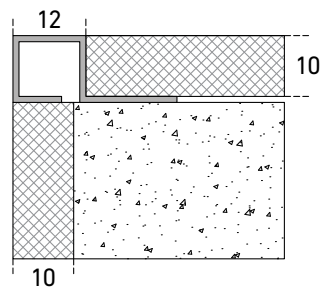
Material Options

- Stainless Steel 304 Brushed Finished
- Stainless Steel 304 Mirrored Finished
- Stainless Steel 316 Brushed Finished
- Stainless Steel 316 Mirrored Finished
- Stainless Steel 316L Brushed Finished
- Stainless Steel 316L Mirrored Finished

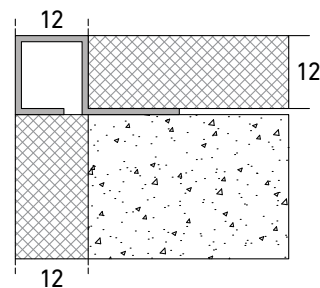
P Shape



MTPWS-12-8



MTPWS-12-10

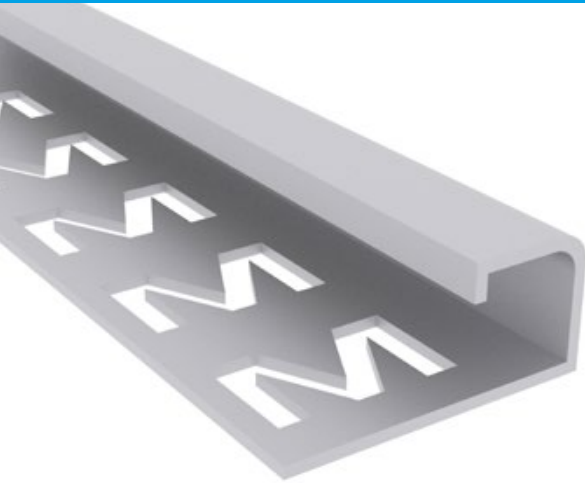


MTPWS-12-12

Standard color range

 Bronze  Rose Gold  Champagne Gold

Actual finish might vary from the illustration. If required, colour sample will be provided for approval.



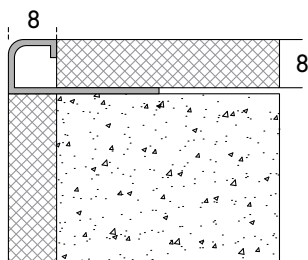
- 1 Trim for walls
- 2 Available in Stainless Steel 304, 316 and 316L finishes
- 3 Easy to install

Standard version	Height h [mm]	Visible Width vw [mm]	Standard Length l [meter]
MTQWS-8-8	8	8	2.7
MTQWS-10-10	10	10	2.7
MTQWS-12.5-12.5	12.5	12.5	2.7

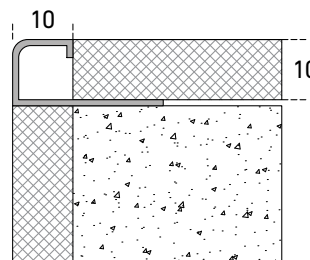
Material Options

- Stainless Steel 304 Brushed Finished
- Stainless Steel 304 Mirrored Finished
- Stainless Steel 316 Brushed Finished
- Stainless Steel 316 Mirrored Finished

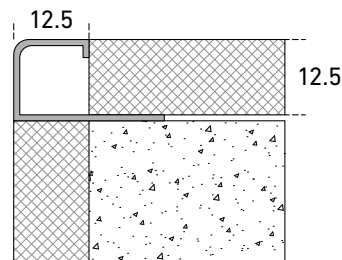
Quart Shape



MTQWS-8-8



MTQWS-10-10

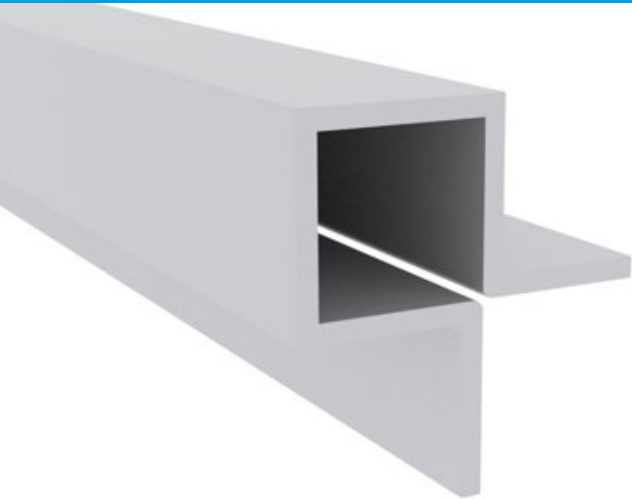


MTQWS-12.5-12.5

Standard color range

Bronze
 Rose Gold
 Champagne Gold

Actual finish might vary from the illustration. If required, colour sample will be provided for approval.



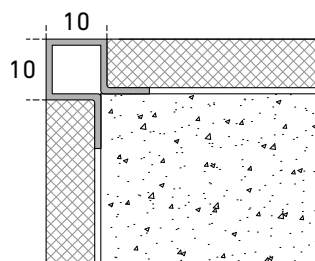
- 1 Trim for walls
- 2 Available in Stainless Steel 304, 316 and 316L finishes
- 3 Easy to install

Standard version	Height h [mm]	Visible Width vw [mm]	Standard Length l [meter]
MTBWS-10-10	10	10	2.7
MTBWS-12-12	12	12	2.7
MTBWS-14-14	14	14	2.7

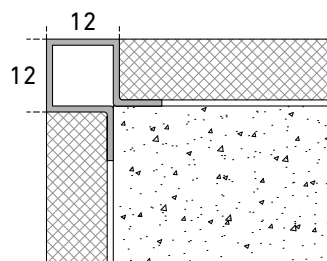
Material Options

- Stainless Steel 304 Brushed Finished
- Stainless Steel 304 Mirrored Finished
- Stainless Steel 316 Brushed Finished
- Stainless Steel 316 Mirrored Finished
- Stainless Steel 316L Brushed Finished
- Stainless Steel 316L Mirrored Finished

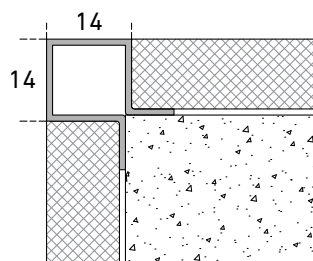
Box Shape



MTBWS-10-10



MTBWS-12-12

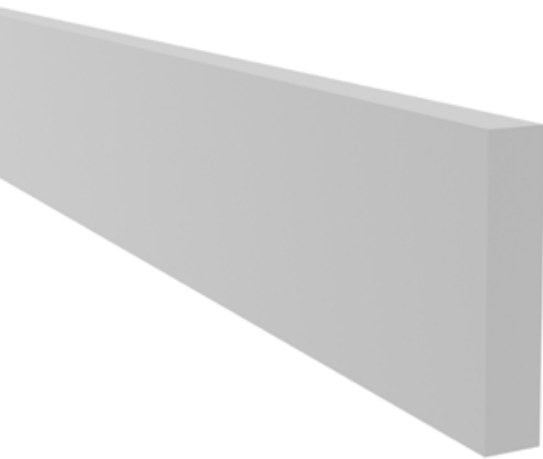


MTBWS-14-14

Standard color range

- Bronze
- Rose Gold
- Champagne Gold

Actual finish might vary from the illustration. If required, colour sample will be provided for approval.



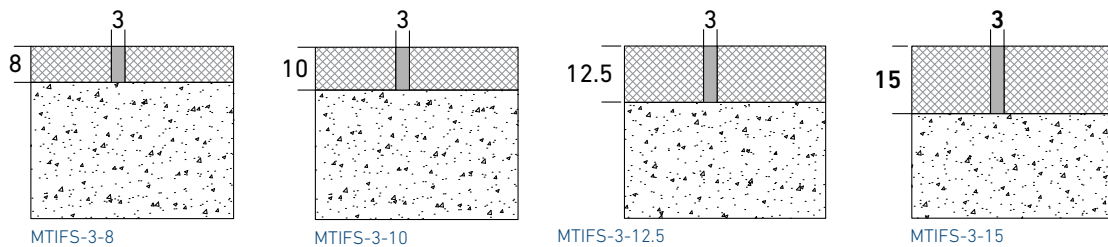
- 1 Trim for floors
- 2 Available in Stainless Steel 304, 316 and 316L finishes
- 3 Easy to install

Standard version	Height h [mm]	Visible Width vw [mm]	Standard Length l [meter]
MTIFS-3-8	8	3	2.7
MTIFS-3-10	10	3	2.7
MTIFS-3-12.5	12.5	3	2.7
MTIFS-3-15	15	3	2.7

Material Options

- Stainless Steel 304 Brushed Finished
- Stainless Steel 304 Mirrored Finished
- Stainless Steel 316 Brushed Finished
- Stainless Steel 316 Mirrored Finished
- Stainless Steel 316L Brushed Finished
- Stainless Steel 316L Mirrored Finished

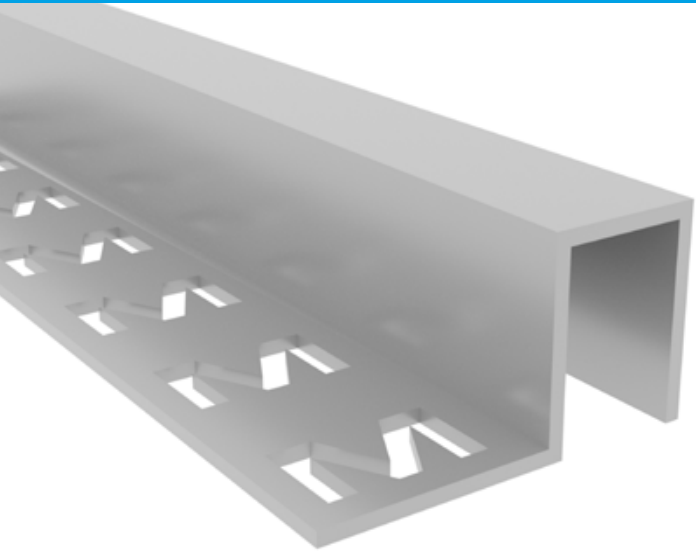
Dividing Strip "I" Shape



Standard color range

- Bronze
- Rose Gold
- Champagne Gold

Actual finish might vary from the illustration. If required, colour sample will be provided for approval.

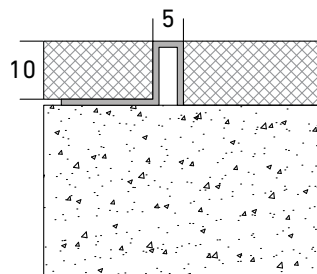


- 1 Trim for floors
- 2 Available in Stainless Steel 304, 316 and 316L finishes
- 3 Easy to install

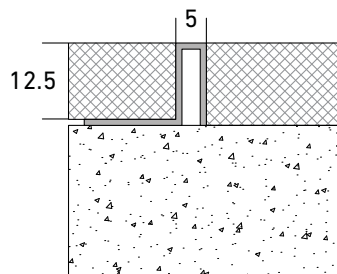
Standard version	Height h [mm]	Visible Width vw [mm]	Standard Length l [meter]
MTCFFS-5-10	10	5	2.7
MTCFFS-5-12.5	12.5	5	2.7
MTCFFS-5-15	15	5	2.7
MTCFFS-5-20	20	5	2.7

Material Options

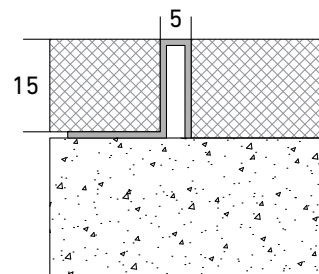
- Stainless Steel 304 Brushed Finished
- Stainless Steel 304 Mirrored Finished
- Stainless Steel 316 Brushed Finished
- Stainless Steel 316 Mirrored Finished
- Stainless Steel 316L Brushed Finished
- Stainless Steel 316L Mirrored Finished



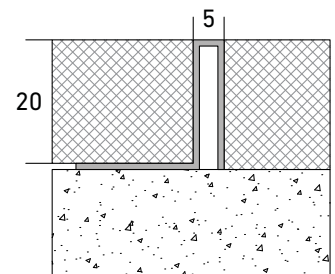
MTCFFS-5-10



MTCFFS-5-12.5



MTCFFS-5-15



MTCFFS-5-20

Standard color range

- Bronze
- Rose Gold
- Champagne Gold

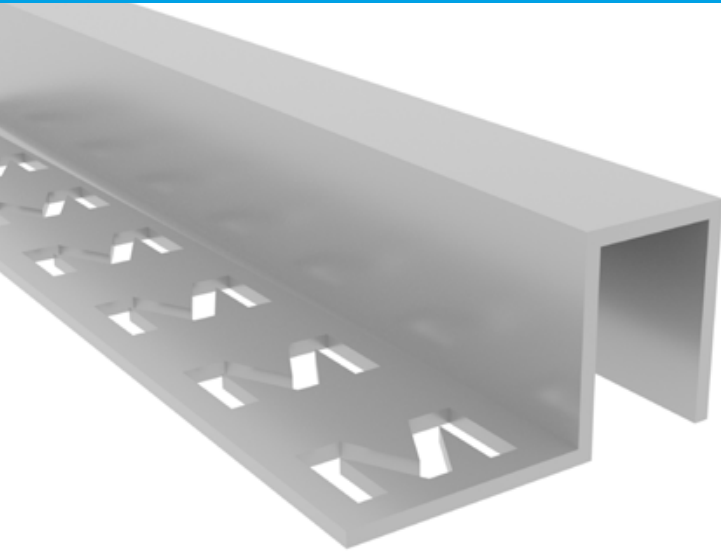
Actual finish might vary from the illustration. If required, colour sample will be provided for approval.

MTCFFS-10

PROFILES FOR FLOORS AND WALLS

MIGUTEK

TRIMS AND PROFILES

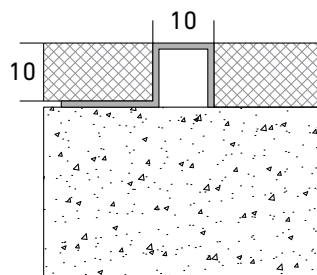


- 1 Trim for floors
- 2 Available in Stainless Steel 304, 316 and 316L finishes
- 3 Easy to install

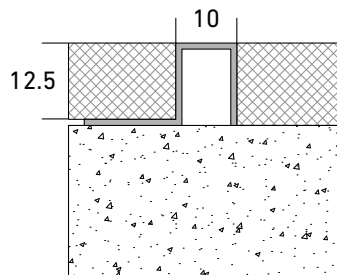
Standard version	Height h [mm]	Visible Width vw [mm]	Standard Length l [meter]
MTCFFS-10-10	10	10	2.7
MTCFFS-10-12.5	12.5	10	2.7
MTCFFS-10-15	15	10	2.7
MTCFFS-10-20	20	10	2.7

Material Options

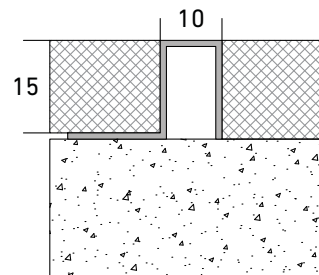
- Stainless Steel 304 Brushed Finished
- Stainless Steel 304 Mirrored Finished
- Stainless Steel 316 Brushed Finished
- Stainless Steel 316 Mirrored Finished
- Stainless Steel 316L Brushed Finished
- Stainless Steel 316L Mirrored Finished



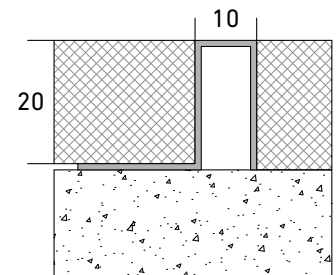
MTCFFS-10-10



MTCFFS-10-12.5



MTCFFS-10-15



MTCFFS-10-20

Standard color range

- Bronze
- Rose Gold
- Champagne Gold

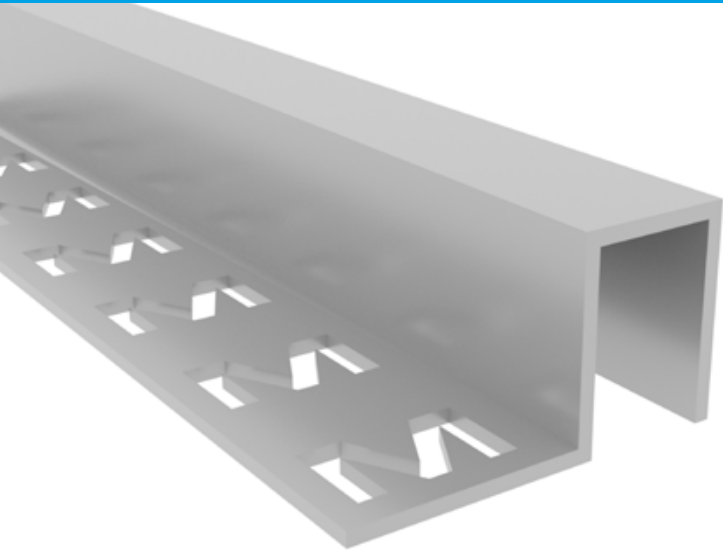
Actual finish might vary from the illustration. If required, colour sample will be provided for approval.

MTCFFS-20

PROFILES FOR FLOORS AND WALLS

MIGUTEK

TRIMS AND PROFILES

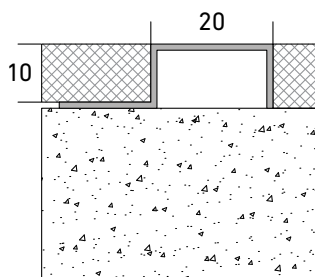


- 1 Trim for floors
- 2 Available in Stainless Steel 304, 316 and 316L finishes
- 3 Easy to install

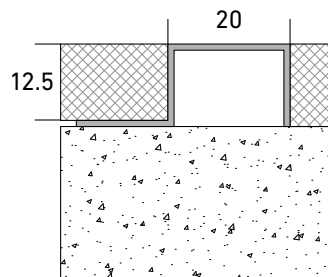
Standard version	Height h [mm]	Visible Width vw [mm]	Standard Length l [meter]
MTCFFS-20-10	10	20	2.7
MTCFFS-20-12.5	12.5	20	2.7
MTCFFS-20-15	15	20	2.7
MTCFFS-20-20	20	20	2.7

Material Options

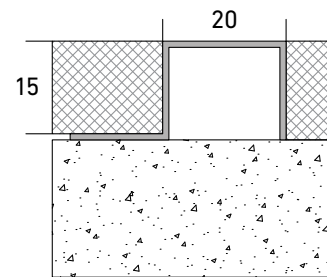
- Stainless Steel 304 Brushed Finished
- Stainless Steel 304 Mirrored Finished
- Stainless Steel 316 Brushed Finished
- Stainless Steel 316 Mirrored Finished
- Stainless Steel 316L Brushed Finished
- Stainless Steel 316L Mirrored Finished



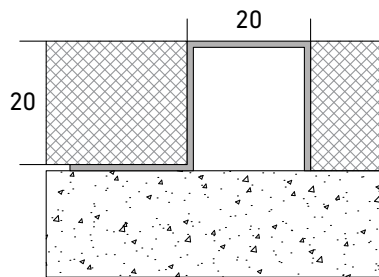
MTCFFS-20-10



MTCFFS-20-12.5



MTCFFS-20-15



MTCFFS-20-20

Standard color range

Bronze
 Rose Gold
 Champagne Gold

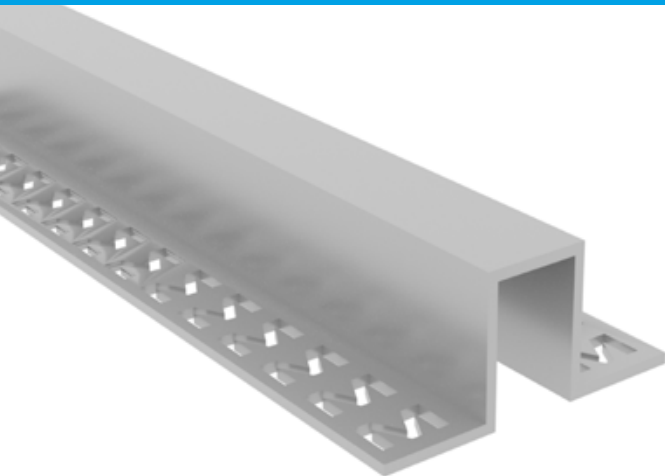
Actual finish might vary from the illustration. If required, colour sample will be provided for approval.

MTUFFS-10

PROFILES FOR FLOORS AND WALLS

MIGUTEK

TRIMS AND PROFILES

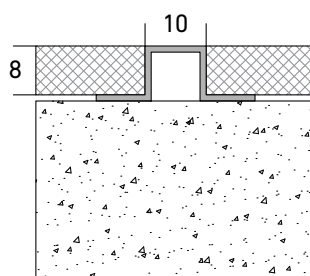


- 1 Trim for floors
- 2 Available in Stainless Steel 304, 316 and 316L finishes
- 3 Easy to install

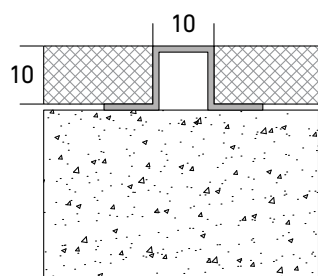
Standard version	Height h [mm]	Visible Width vw [mm]	Standard Length l [meter]
MTUFFS-10-8	8	10	2.7
MTUFFS-10-10	10	10	2.7
MTUFFS-10-12.5	12.5	10	2.7
MTUFFS-10-15	15	10	2.7
MTUFFS-10-20	20	10	2.7

Material Options

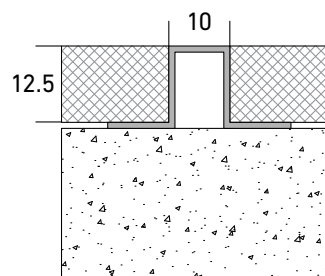
- Stainless Steel 304 Brushed Finished
- Stainless Steel 304 Mirrored Finished
- Stainless Steel 316 Brushed Finished
- Stainless Steel 316 Mirrored Finished
- Stainless Steel 316L Brushed Finished
- Stainless Steel 316L Mirrored Finished



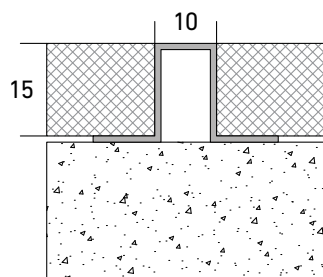
MTUFFS-10-8



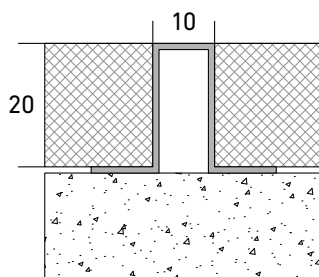
MTUFFS-10-10



MTUFFS-10-12.5



MTUFFS-10-15

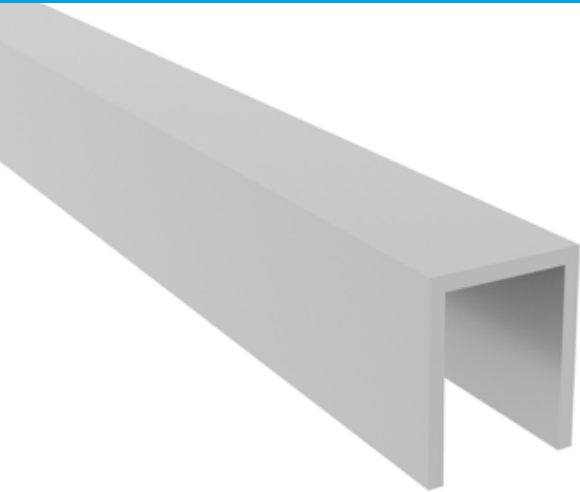


MTUFFS-10-20

Standard color range

- Bronze
- Rose Gold
- Champagne Gold

Actual finish might vary from the illustration. If required, colour sample will be provided for approval.



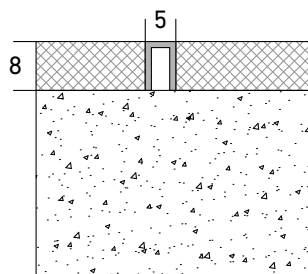
- 1 Trim for floors
- 2 Available in Stainless Steel 304, 316 and 316L finishes
- 3 Easy to install

Standard version	Height h [mm]	Visible Width vw [mm]	Standard Length l [meter]
MTUFS-5-8	8	5	2.7
MTUFS-5-10	10	5	2.7
MTUFS-5-12.5	12.5	5	2.7
MTUFS-5-15	15	5	2.7
MTUFS-5-20	20	5	2.7

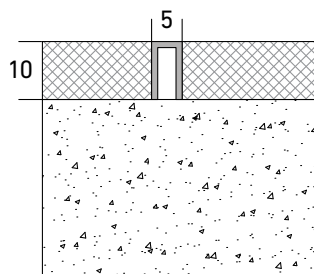
Material Options

- Stainless Steel 304 Brushed Finished
- Stainless Steel 304 Mirrored Finished
- Stainless Steel 316 Brushed Finished
- Stainless Steel 316 Mirrored Finished
- Stainless Steel 316L Brushed Finished
- Stainless Steel 316L Mirrored Finished

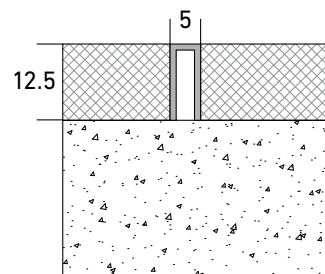
U Channel



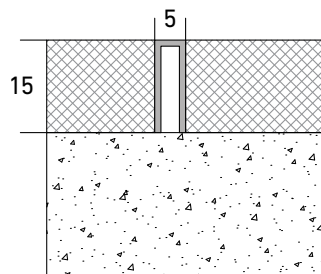
MTUFS-5-8



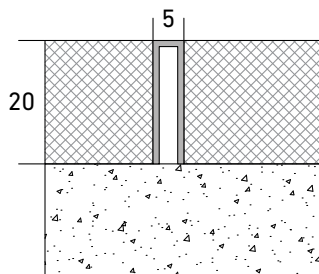
MTUFS-5-10



MTUFS-5-12.5



MTUFS-5-15

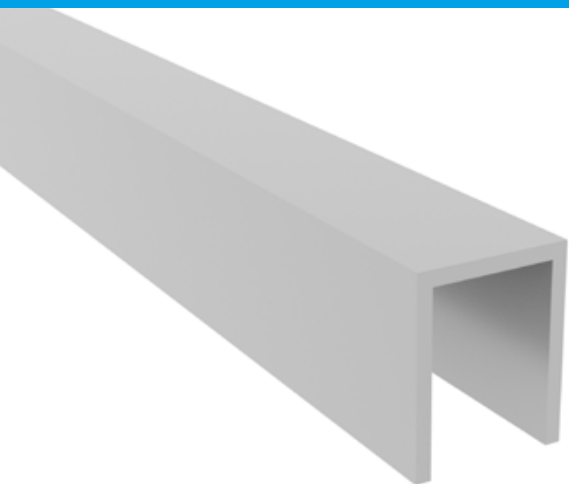


MTUFS-5-20

Standard color range

- Bronze
- Rose Gold
- Champagne Gold

Actual finish might vary from the illustration. If required, colour sample will be provided for approval.



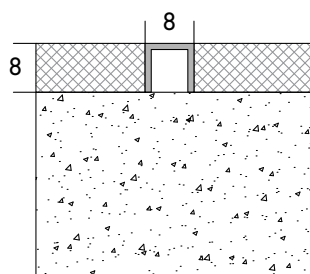
- 1 Trim for floors
- 2 Available in Stainless Steel 304, 316 and 316L finishes
- 3 Easy to install

Standard version	Height h [mm]	Visible Width vw [mm]	Standard Length l [meter]
MTUFS-8-8	8	8	2.7
MTUFS-8-10	10	8	2.7
MTUFS-8-12.5	12.5	8	2.7
MTUFS-8-15	15	8	2.7
MTUFS-8-20	20	8	2.7

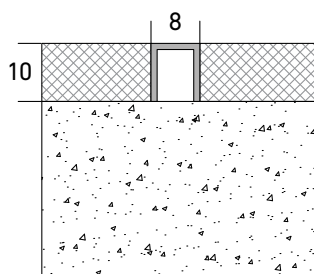
Material Options

- Stainless Steel 304 Brushed Finished
- Stainless Steel 304 Mirrored Finished
- Stainless Steel 316 Brushed Finished
- Stainless Steel 316 Mirrored Finished
- Stainless Steel 316L Brushed Finished
- Stainless Steel 316L Mirrored Finished

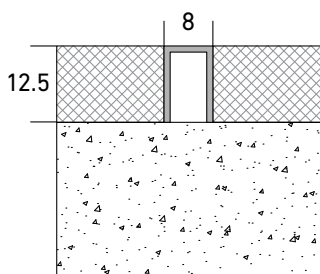
U Channel



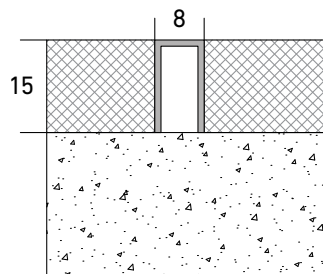
MTUFS-8-8



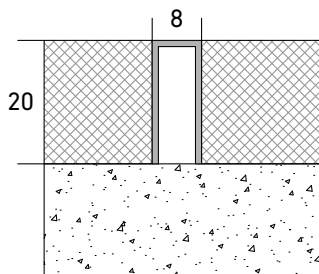
MTUFS-8-10



MTUFS-8-12.5



MTUFS-8-15

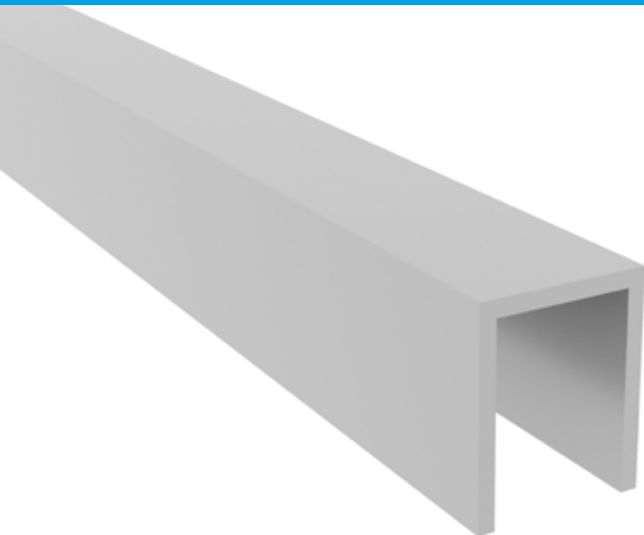


MTUFS-8-20

Standard color range

- Bronze
- Rose Gold
- Champagne Gold

Actual finish might vary from the illustration. If required, colour sample will be provided for approval.



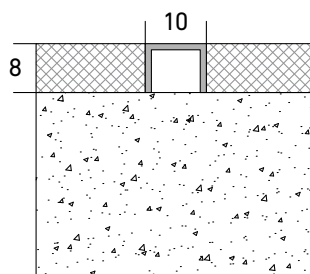
- 1 Trim for floors
- 2 Available in Stainless Steel 304, 316 and 316L finishes
- 3 Easy to install

Standard version	Height h [mm]	Visible Width vw [mm]	Standard Length l [meter]
MTUFS-10-8	8	10	2.7
MTUFS-10-10	10	10	2.7
MTUFS-10-12.5	12.5	10	2.7
MTUFS-10-15	15	10	2.7
MTUFS-10-20	20	10	2.7

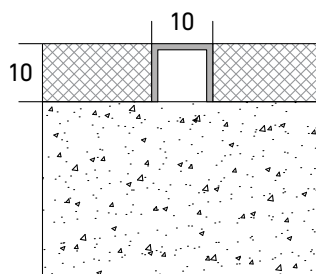
Material Options

- Stainless Steel 304 Brushed Finished
- Stainless Steel 304 Mirrored Finished
- Stainless Steel 316 Brushed Finished
- Stainless Steel 316 Mirrored Finished
- Stainless Steel 316L Brushed Finished
- Stainless Steel 316L Mirrored Finished

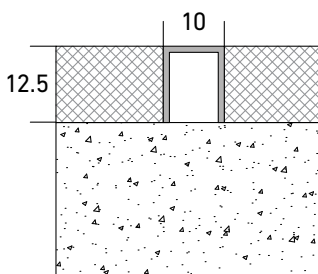
U Channel



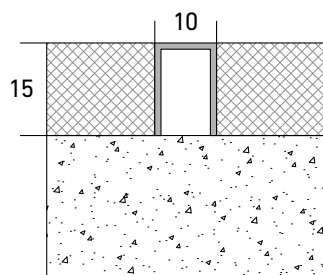
MTUFS-10-8



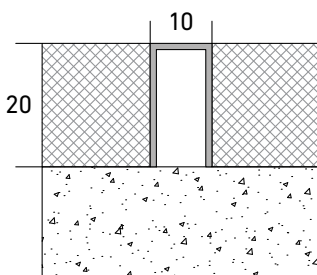
MTUFS-10-10



MTUFS-10-12.5



MTUFS-10-15

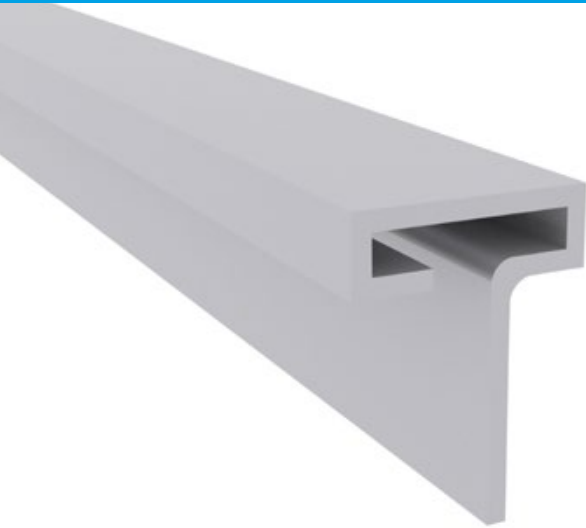


MTUFS-10-20

Standard color range

- Bronze
- Rose Gold
- Champagne Gold

Actual finish might vary from the illustration. If required, colour sample will be provided for approval.



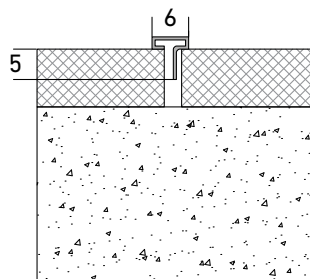
- 1 Trim for floors
- 2 Available in Stainless Steel 304, 316 and 316L finishes
- 3 Easy to install

Standard version	Height h [mm]	Visible Width vw [mm]	Standard Length l [meter]
MTTFS-6-5	5	6	2.7
MTTFS-6-6	6	6	2.7
MTTFS-6-8	8	6	2.7

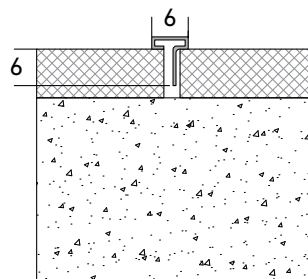
Material Options

- Stainless Steel 304 Brushed Finished
- Stainless Steel 304 Mirrored Finished
- Stainless Steel 316 Brushed Finished
- Stainless Steel 316 Mirrored Finished
- Stainless Steel 316L Brushed Finished
- Stainless Steel 316L Mirrored Finished

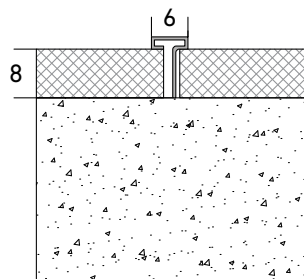
T Shape



MTTFS-6-5



MTTFS-6-6

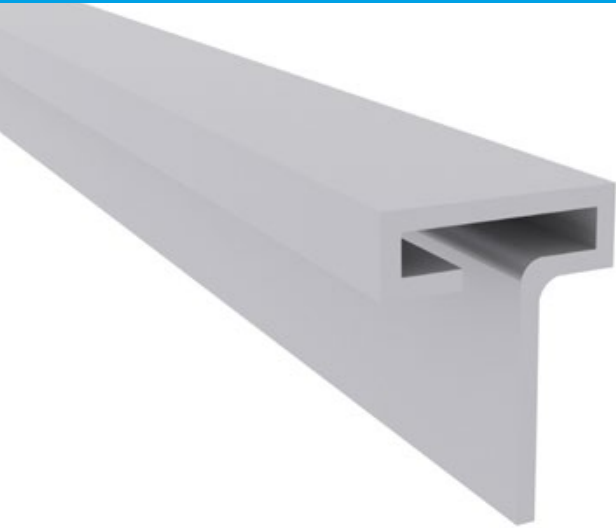


MTTFS-6-8

Standard color range

Bronze
 Rose Gold
 Champagne Gold

Actual finish might vary from the illustration. If required, colour sample will be provided for approval.



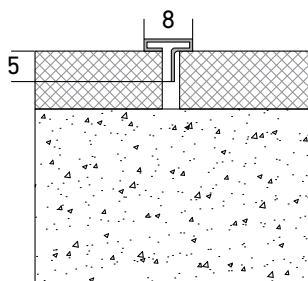
- 1 Trim for floors
- 2 Available in Stainless Steel 304, 316 and 316L finishes
- 3 Easy to install

Standard version	Height h [mm]	Visible Width vw [mm]	Standard Length l [meter]
MTTFS-8-5	5	8	2.7
MTTFS-8-6	6	8	2.7
MTTFS-8-8	8	8	2.7

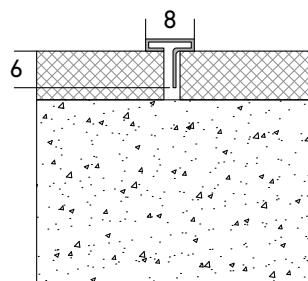
Material Options

- Stainless Steel 304 Brushed Finished
- Stainless Steel 304 Mirrored Finished
- Stainless Steel 316 Brushed Finished
- Stainless Steel 316 Mirrored Finished
- Stainless Steel 316L Brushed Finished
- Stainless Steel 316L Mirrored Finished

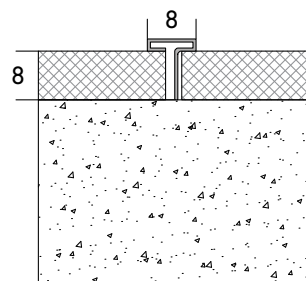
T Shape



MTTFS-8-5



MTTFS-8-6



MTTFS-8-8

Standard color range

- Bronze
- Rose Gold
- Champagne Gold

Actual finish might vary from the illustration. If required, colour sample will be provided for approval.



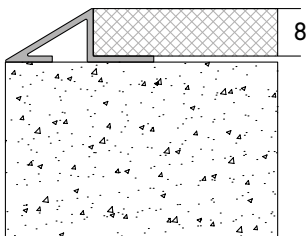
- 1 Trim for walls
- 2 Available in Stainless Steel 304, 316 and 316L finishes
- 3 Dividing Strip "Z" Shape

Standard version	Height h [mm]	Standard Length l [meter]
MTZFS-8	8	3
MTZFS-10	10	3
MTZFS-12.5	12.5	3
MTZFS-15	15	3

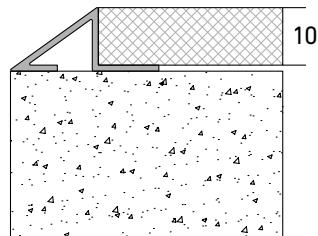
Material Options

- Stainless Steel 304 Brushed Finished
- Stainless Steel 304 Mirrored Finished
- Stainless Steel 316 Brushed Finished
- Stainless Steel 316 Mirrored Finished
- Stainless Steel 316L Brushed Finished
- Stainless Steel 316L Mirrored Finished

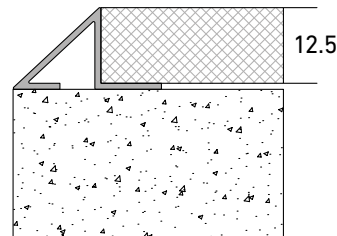
Dividing Strip "Z" Shape



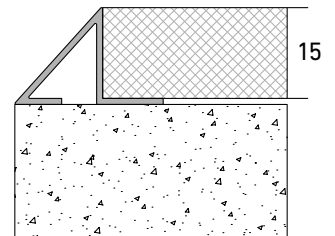
MTZFS-8



MTZFS-10



MTZFS-12.5



MTZFS-15

Standard color range

Bronze
 Rose Gold
 Champagne Gold

Actual finish might vary from the illustration. If required, colour sample will be provided for approval.



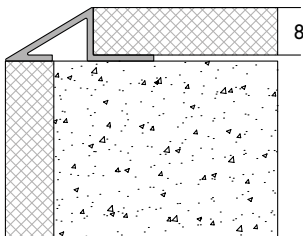
- 1 Trim for walls
- 2 Available in Stainless Steel 304, 316 and 316L finishes
- 3 Easy to install

Standard version	Height h [mm]	Standard Length l [meter]
MTZWS-8	8	3
MTZWS-10	10	3
MTZWS-12.5	12.5	3
MTZWS-15	15	3

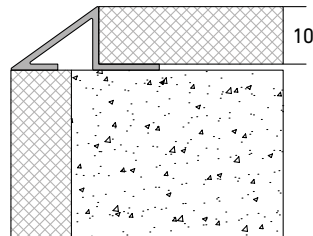
Material Options

- Stainless Steel 304 Brushed Finished
- Stainless Steel 304 Mirrored Finished
- Stainless Steel 316 Brushed Finished
- Stainless Steel 316 Mirrored Finished
- Stainless Steel 316L Brushed Finished
- Stainless Steel 316L Mirrored Finished

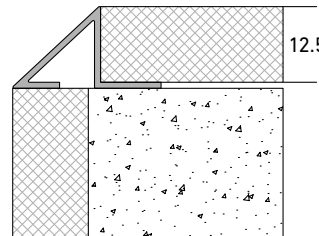
Dividing Strip "Z" Shape



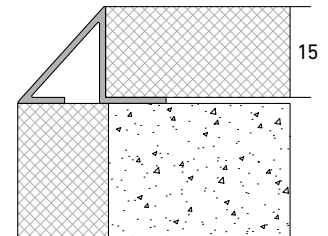
MTZWS-8



MTZWS-10



MTZWS-12.5



MTZWS-15

Standard color range

Bronze
 Rose Gold
 Champagne Gold

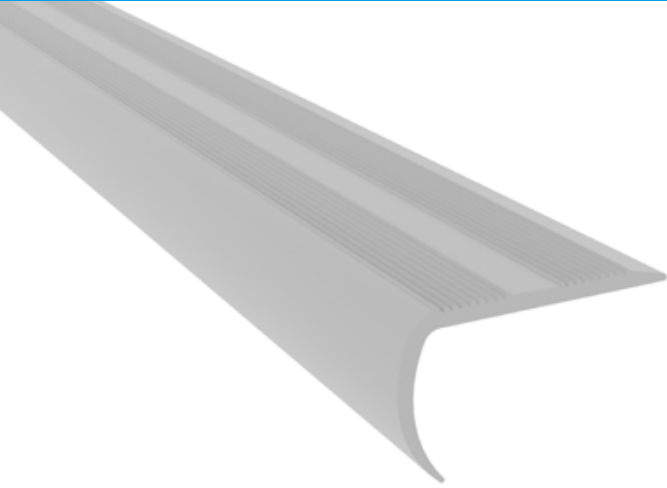
Actual finish might vary from the illustration. If required, colour sample will be provided for approval.

MSNA-45

STAIR NOSING

MIGUTEC

TRIMS AND PROFILES



- 1 Step edge protection
- 2 Slip resistance
- 3 Visual contrast for step edge

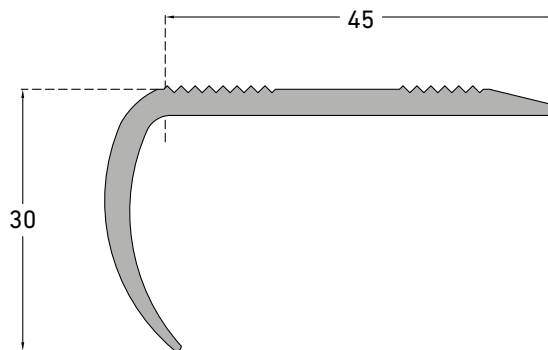
Standard version	Height h [mm]	Visible Width vw [mm]	Standard Length l [meter]
MSNA-45-30	30	45	2.7

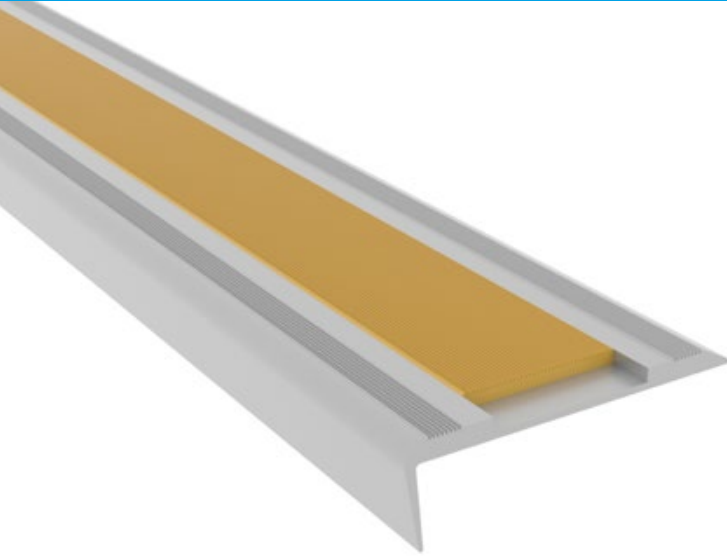
Material Options

- Extruded Aluminum Alloy 6063-T6

Finish Options

- Mill Finish
- Silver Anodized Finish





- 1 Step edge protection
- 2 Slip resistance
- 3 Visual contrast for step edge

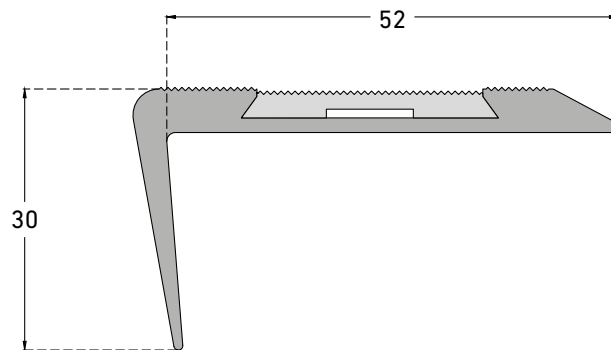
Standard version	Height h [mm]	Visible Width vw [mm]	Standard Length l [meter]
MSNCA-52-30	30	52	2.7

Material Options

- Extruded Aluminum Alloy 6063-T6

Finish Options

- Available with different color of carborundum: Black, Grey, Beige

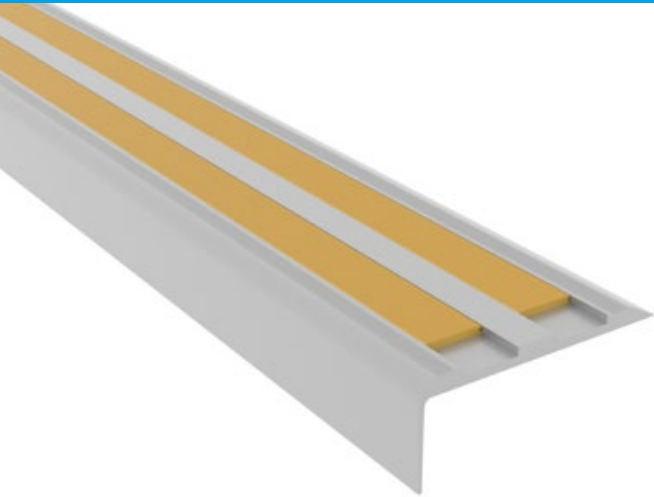


MSNCA-75

STAIR NOSING

MIGUTEC

TRIMS AND PROFILES



- 1 Step edge protection
- 2 Slip resistance
- 3 Visual contrast for step edge

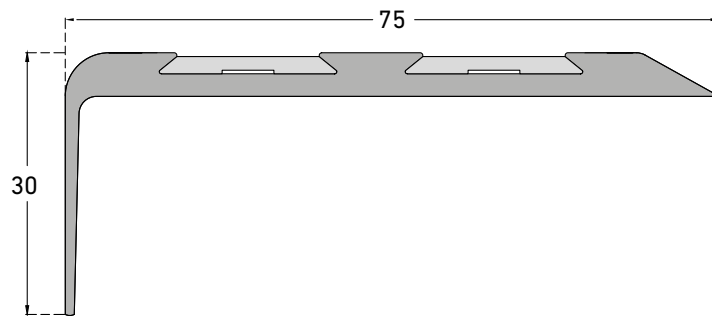
Standard version	Height h [mm]	Visible Width vw [mm]	Standard Length l [meter]
MSNCA-75-30	30	75	2.7

Material Options

- Extruded Aluminum Alloy 6063-T6

Finish Options

- Available with different color of carborundum: Black, Grey, Beige

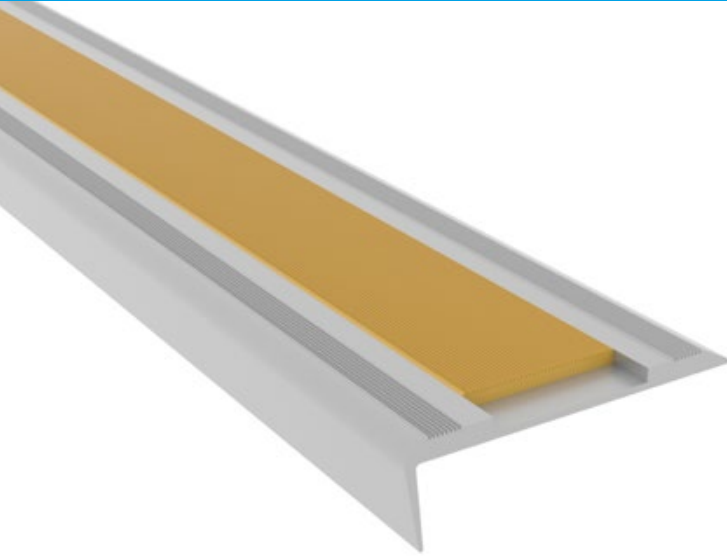


MSNCA-82

STAIR NOSING

MIGUTEC

TRIMS AND PROFILES



- 1 Step edge protection
- 2 Slip resistance
- 3 Visual contrast for step edge

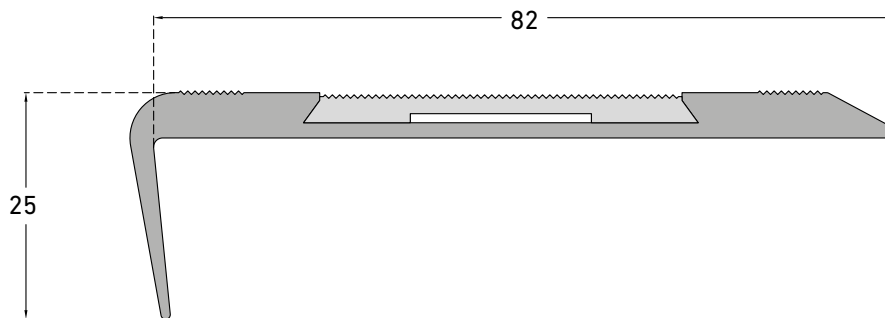
Standard version	Height h [mm]	Visible Width vw [mm]	Standard Length l [meter]
MSNCA-82-25	25	82	2.7

Material Options

- Extruded Aluminum Alloy 6063-T6

Finish Options

- Available with different color of carborundum: Black, Grey, Beige

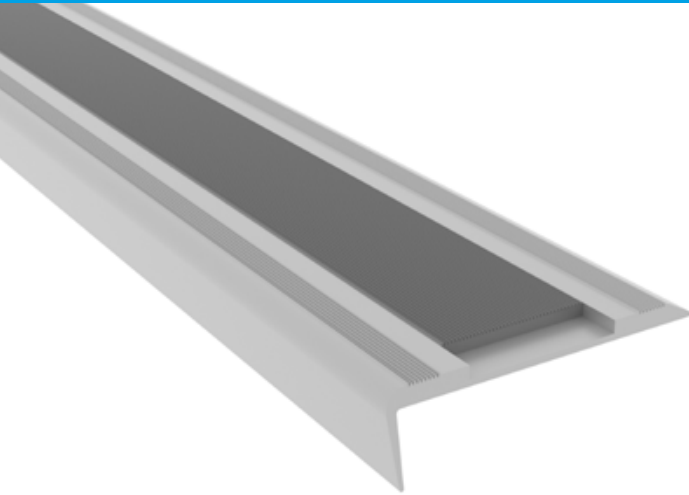


MSNRA-52

STAIR NOSING

MIGUTEC

TRIMS AND PROFILES



- 1 Step edge protection
- 2 Slip resistance
- 3 Visual contrast for step edge

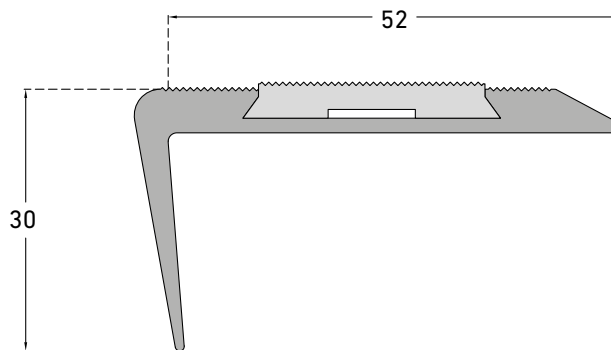
Standard version	Height h [mm]	Visible Width vw [mm]	Standard Length l [meter]
MSNCA-75-30	30	75	2.7

Material Options

- Extruded Aluminum Alloy 6063-T6

Finish Options

- Available with different color of rubber: Black, Grey, Beige

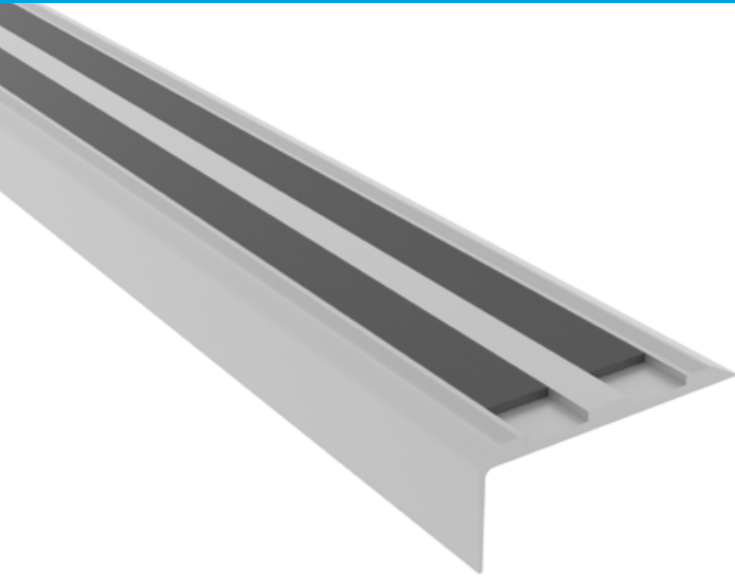


MSNRA-75

STAIR NOSING

MIGUTEC

TRIMS AND PROFILES



- 1 Step edge protection
- 2 Slip resistance
- 3 Visual contrast for step edge

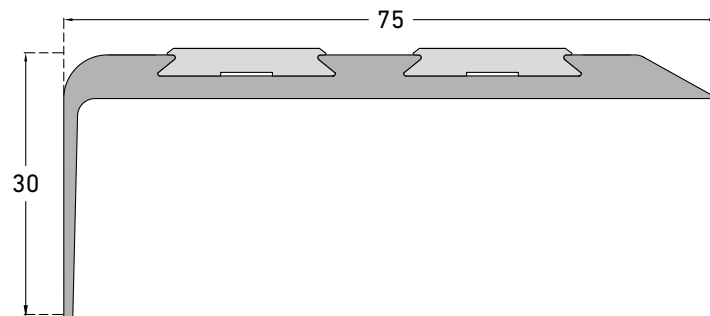
Standard version	Height h [mm]	Visible Width vw [mm]	Standard Length l [meter]
MSNRA-75-30	30	75	2.7

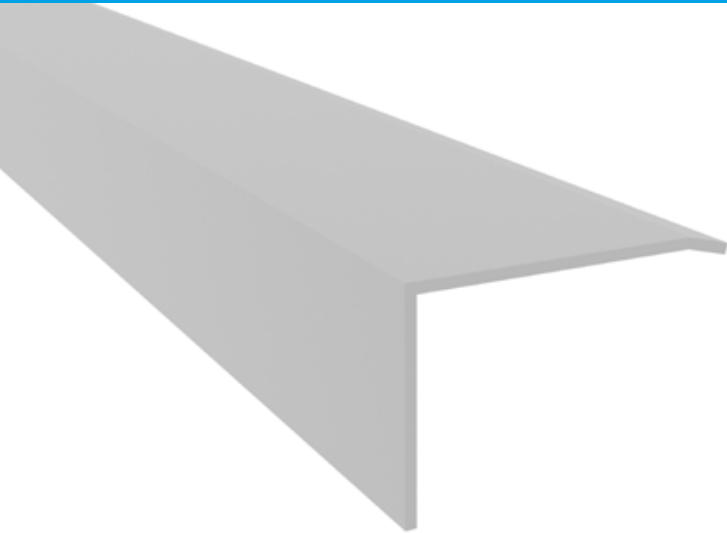
Material Options

- Extruded Aluminum Alloy 6063-T6

Finish Options

- Available with different color of rubber: Black, Grey, Beige



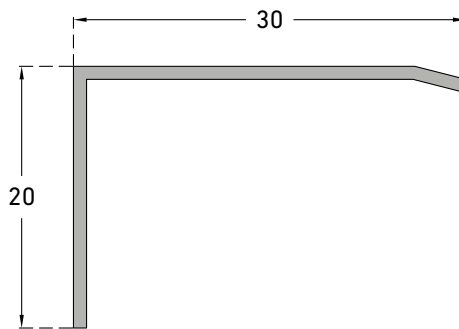


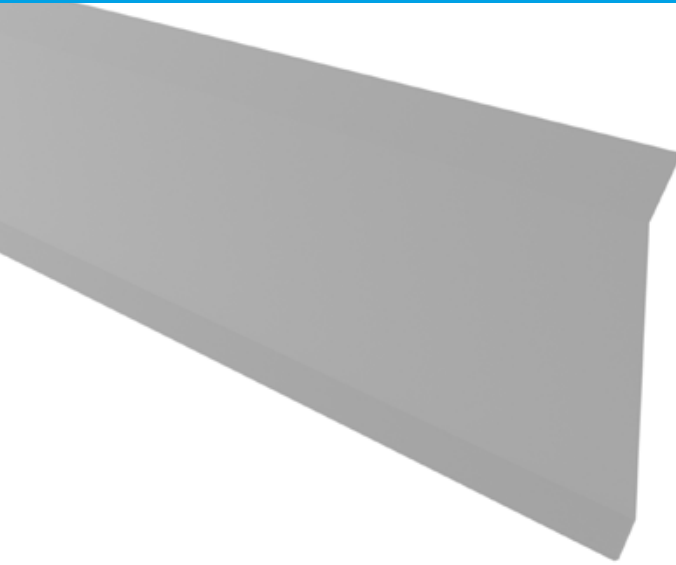
- 1 Step edge protection
- 2 Slip resistance
- 3 Visual contrast for step edge

Standard version	Height h [mm]	Visible Width vw [mm]	Standard Length l [meter]
MSNS-30	20	30	2.7

Material Options

- Stainless Steel 304 Brushed Finished
- Stainless Steel 304 Mirrored Finished
- Stainless Steel 316 Brushed Finished
- Stainless Steel 316 Mirrored Finished
- Stainless Steel 316L Brushed Finished
- Stainless Steel 316L Mirrored Finished





- 1 Skirting for floor
- 2 Highly durable
- 3 Easy to install

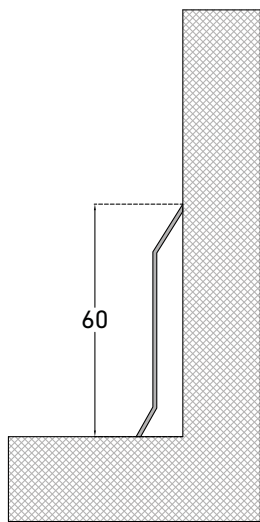
Standard version	Height h [mm]	Standard Length l [meter]
MSKSA-60	60	2.7
MSKSA-80	80	2.7
MSKSA-100	100	2.7

Material Options

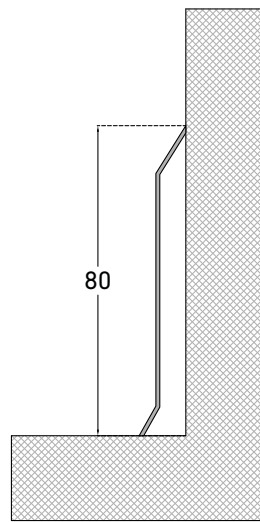
- Extruded Aluminum

Finish Options

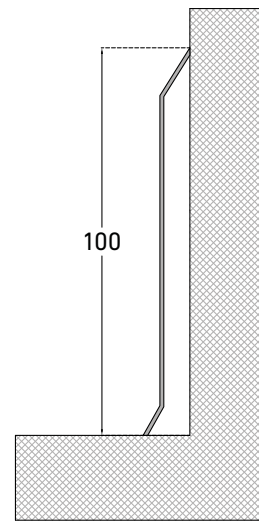
- Colored anodized
- Powder coat



MSKSA-60




MSKSA-80

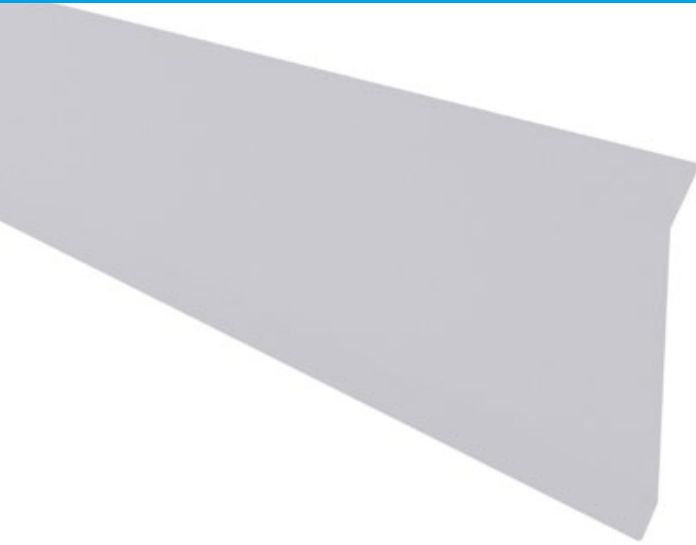


MSKSA-100

Standard color range

- | | | | | |
|--|---|---|--|---|
|  Matt Silver |  Polished Silver |  Champ Brush |  Bronze Matt |  Bronze Matt |
|  Matt Black |  Polish Bronze |  Polish Gold |  Matt Gold | |

Actual finish might vary from the illustration. If required, colour sample will be provided for approval.

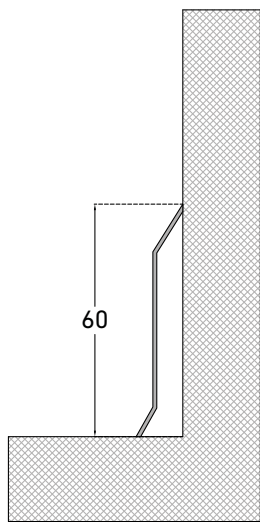


- 1 Skirting for floor
- 2 Available in Stainless Steel 304, 316 and 316L finishes
- 3 Easy to install

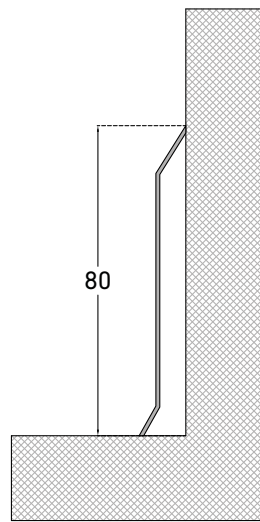
Standard version	Height h [mm]	Standard Length l [meter]
MSKSS-60	60	2.7
MSKSS-80	80	2.7
MSKSS-100	100	2.7

Material Options

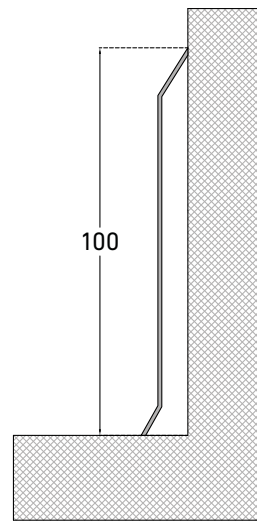
- Stainless Steel 304 Brushed Finished
- Stainless Steel 304 Mirrored Finished
- Stainless Steel 316 Brushed Finished
- Stainless Steel 316 Mirrored Finished
- Stainless Steel 316L Brushed Finished
- Stainless Steel 316L Mirrored Finished



MSKSS-60



MSKSS-80

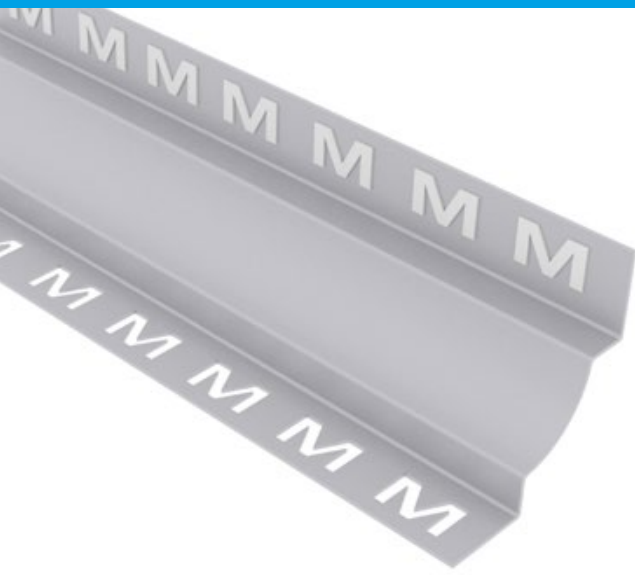


MSKSS-100

Standard color range

Bronze
 Rose Gold
 Champagne Gold

Actual finish might vary from the illustration. If required, colour sample will be provided for approval.

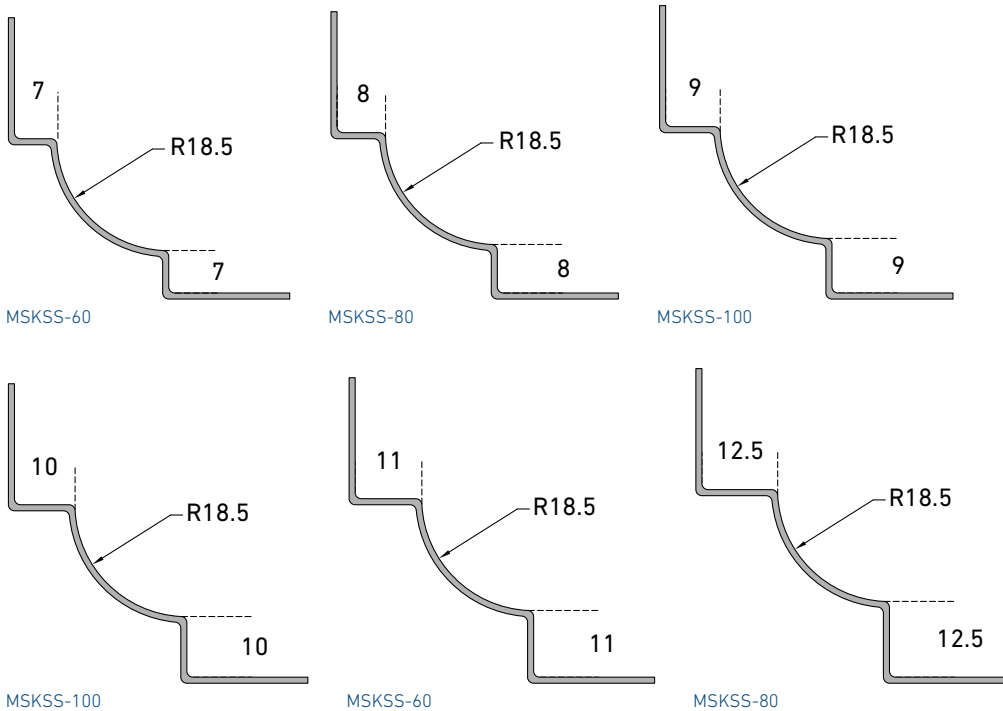


- 1 Skirting for floor & wall
- 2 Available in Stainless Steel 304, 316 and 316L finishes
- 3 Easy to install

Standard version	Height h [mm]	Standard Length l [meter]
MSKCS-7	8	2.7
MSKCS-8	8	2.7
MSKCS-9	9	2.7
MSKCS-10	10	2.7
MSKCS-11	11	2.7
MSKCS-12.5	12.5	2.7

Material Options

- Stainless Steel 304 Brushed Finished
- Stainless Steel 304 Mirrored Finished
- Stainless Steel 316 Brushed Finished
- Stainless Steel 316 Mirrored Finished
- Stainless Steel 316L Brushed Finished
- Stainless Steel 316L Mirrored Finished



Standard color range

- Bronze
- Rose Gold
- Champagne Gold

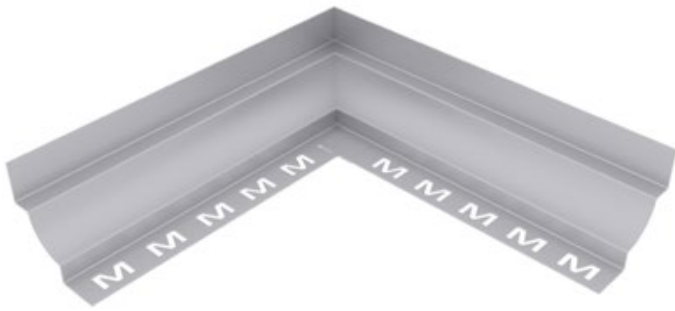
Actual finish might vary from the illustration. If required, colour sample will be provided for approval.



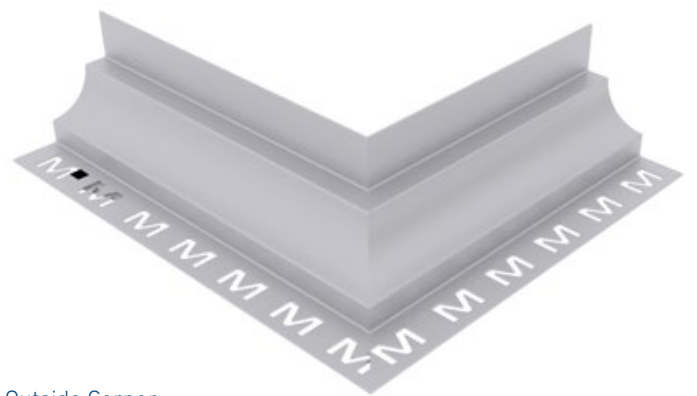
Floor Corner Condition



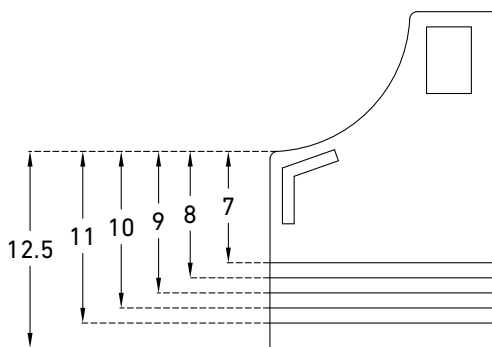
Wall Corner Condition



Inside Corner

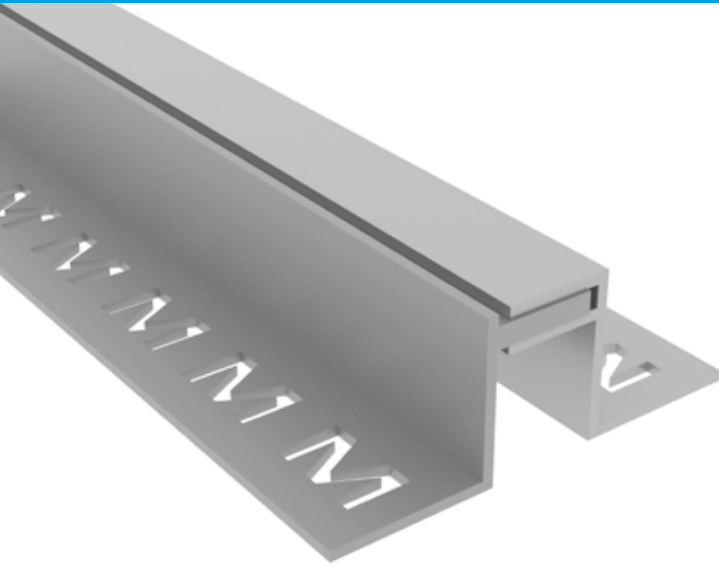


Outside Corner



End Cap

- MSKCS-7-CAP
- MSKCS-8-CAP
- MSKCS-9-CAP
- MSKCS-10-CAP
- MSKCS-11-CAP
- MSKCS-12.5 CAP



- 1 **Tile Movement joints**
- 2 **Highly durable**
- 3 **Easy to install**

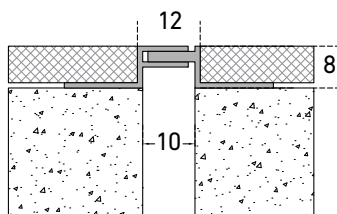
Standard version	Height h [mm]	Visible Width vw [mm]	Joint width [mm]	Total movement [mm]	Standard Length l [meter]
MTMFFA-12-8	8	12	10	4 (±2)	2.7
MTMFFA-12-10	10	12	10	4 (±2)	2.7
MTMFFA-12-15	15	12	10	4 (±2)	2.7
MTMFFA-12-20	20	12	10	4 (±2)	2.7
MTMFFA-12-25	8	12	10	4 (±2)	2.7

Material Options

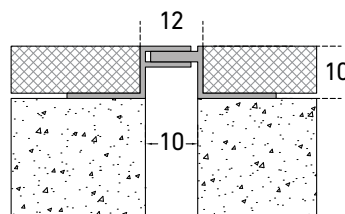
- Extruded Aluminum

Finish Options

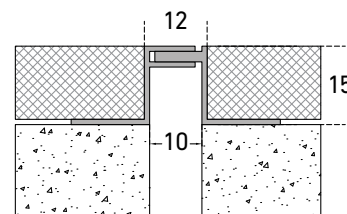
- Colored anodized



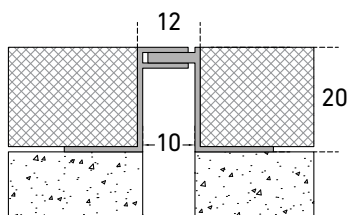
MTMFFA-12-8



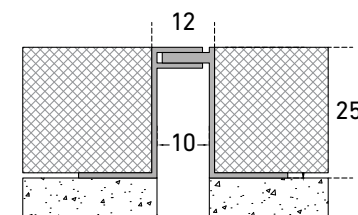
MTMFFA-12-10



MTMFFA-12-15



MTMFFA-12-20



MTMFFA-12-25

Standard color range

■ Matt Silver

■ Polished Silver

■ Champ Brush

■ Bronze Matt

■ Bronze Matt

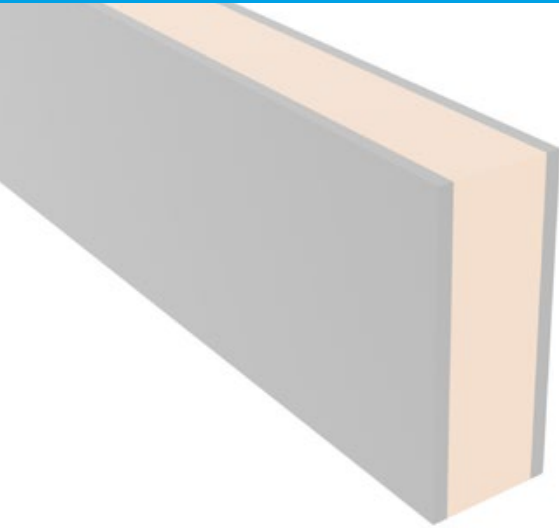
■ Matt Black

■ Polish Bronze

■ Polish Gold

■ Matt Gold

Actual finish might vary from the illustration. If required, colour sample will be provided for approval.



- 1 **Tile movement joints with rubber insert**
- 2 **Highly durable**
- 3 **Easy to install**

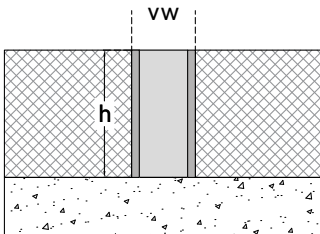
Standard version	Height h [mm]	Visible Width vw [mm]	Standard Length l [meter]
MTMIFA-10-10	10	10	2.44
MTMIFA-10-12.5	12.5	10	2.44
MTMIFA-10-15	15	10	2.44
MTMIFA-10-20	20	10	2.44
MTMIFA-10-25	25	10	2.44
MTMIFA-10-30	30	10	2.44
MTMIFA-10-50	50	10	2.44

Material Options














- Extruded Aluminum
- Insert Rubber

Finish Options

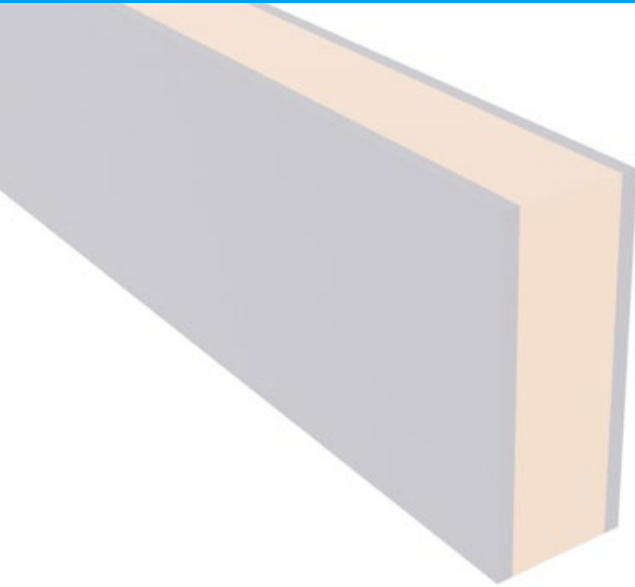
- Rubber insert available in different colors



Standard color range

- | | | | | |
|---|---|--|--|--|
|  M Black - 1101 |  M Grey - 1301 |  M Grey - 2302 |  M Grey - 5365 |  M Grey - 5305 |
|  M Grey - 9369 |  M White - 2512 |  M Grey - 6366 |  M Beige - 1971 |  M Beige - 5975 |
|  M Beige - 6954 |  M Beige - 11011 |  M Beige - 1901 | | |

Actual finish might vary from the illustration. If required, colour sample will be provided for approval.



- 1 **Tile movement joints with rubber insert**
- 2 **Available in Stainless Steel 304, 316 and 316L finishes**
- 3 **Easy to install**

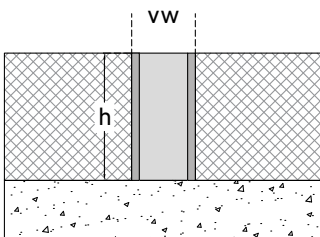
Standard version	Height h [mm]	Visible Width vw [mm]	Standard Length l [meter]
MTMIFS-10-10	10	10	2.44
MTMIFS-10-12.5	12.5	10	2.44
MTMIFS-10-15	15	10	2.44
MTMIFS-10-20	20	10	2.44
MTMIFS-10-25	25	10	2.44
MTMIFS-10-30	30	10	2.44
MTMIFS-10-50	50	10	2.44

Material Options

- Stainless Steel 304, 316, 316L finish

Finish Options:

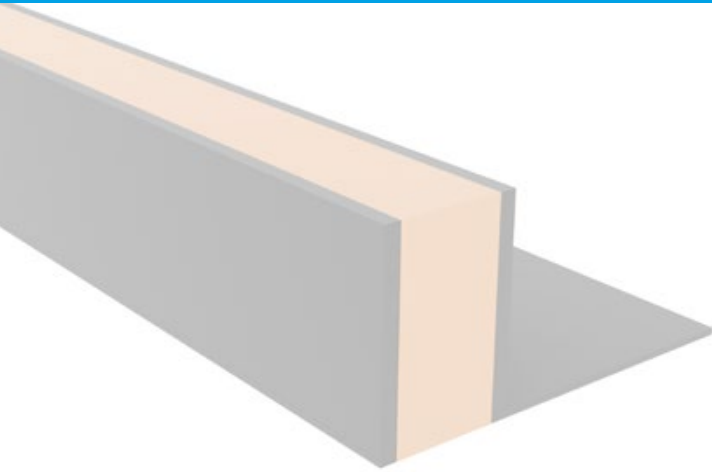
- Rubber insert available in different colors



Standard color range

- | | | | | |
|----------------|-----------------|----------------|----------------|----------------|
| M Black - 1101 | M Grey - 1301 | M Grey - 2302 | M Grey - 5365 | M Grey - 5305 |
| M Grey - 9369 | M White - 2512 | M Grey - 6366 | M Beige - 1971 | M Beige - 5975 |
| M Beige - 6954 | M Beige - 11011 | M Beige - 1901 | | |

Actual finish might vary from the illustration. If required, colour sample will be provided for approval.



- 1 **Tile movement joints with rubber insert**
- 2 **Highly durable**
- 3 **Easy to install**

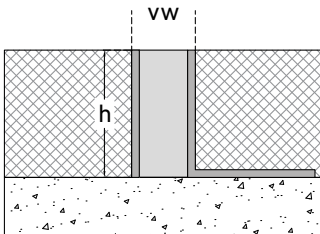
Standard version	Height h [mm]	Visible Width vw [mm]	Standard Length l [meter]
MTMLFA-10-10	10	10	2.44
MTMLFA-10-12.5	12.5	10	2.44
MTMLFA-10-15	15	10	2.44
MTMLFA-10-20	20	10	2.44
MTMLFA-10-25	25	10	2.44
MTMLFA-10-30	30	10	2.44
MTMLFA-10-50	50	10	2.44

Material Options














- Extruded Aluminum
- Insert Rubber

Finish Options

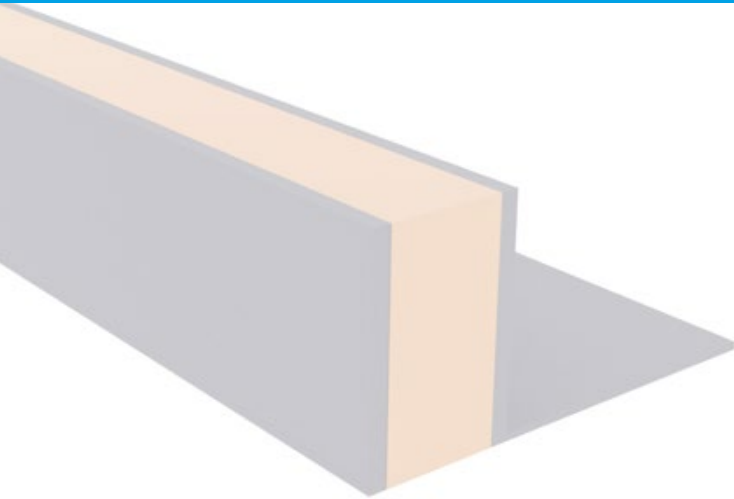
- Rubber insert available in different colors



Standard color range

- | | | | | |
|---|---|--|--|--|
|  M Black - 1101 |  M Grey - 1301 |  M Grey - 2302 |  M Grey - 5365 |  M Grey - 5305 |
|  M Grey - 9369 |  M White - 2512 |  M Grey - 6366 |  M Beige - 1971 |  M Beige - 5975 |
|  M Beige - 6954 |  M Beige - 11011 |  M Beige - 1901 | | |

Actual finish might vary from the illustration. If required, colour sample will be provided for approval.



- 1 **Tile movement joints with rubber insert**
- 2 **Available in Stainless Steel 304, 316 and 316L finishes**
- 3 **Easy to install**

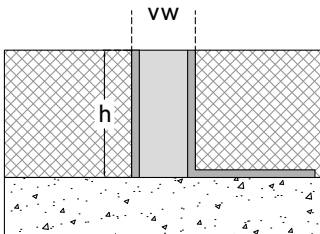
Standard version	Height h [mm]	Visible Width vw [mm]	Standard Length l [meter]
MTMLFS-10-10	10	10	2.44
MTMLFS-10-12.5	12.5	10	2.44
MTMLFS-10-15	15	10	2.44
MTMLFS-10-20	20	10	2.44
MTMLFS-10-25	25	10	2.44
MTMLFS-10-30	30	10	2.44
MTMLFS-10-50	50	10	2.44

Material Options

- Stainless Steel 304, 316, 316L finish

Finish Options

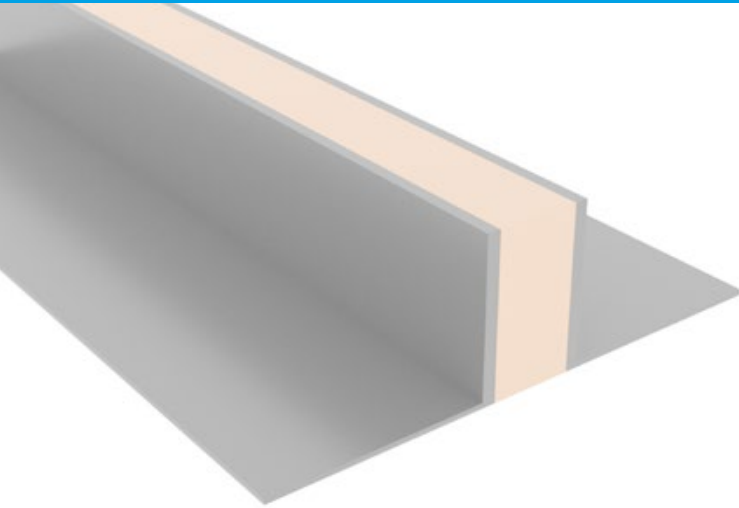
- Rubber insert available in different colors



Standard color range

- M Black - 1101
- M Grey - 1301
- M Grey - 2302
- M Grey - 5365
- M Grey - 5305
- M Grey - 9369
- M White - 2512
- M Grey - 6366
- M Beige - 1971
- M Beige - 5975
- M Beige - 6954
- M Beige - 11011
- M Beige - 1901

Actual finish might vary from the illustration. If required, colour sample will be provided for approval.



- 1 **Tile movement joints with rubber insert**
- 2 **Highly durable**
- 3 **Easy to install**

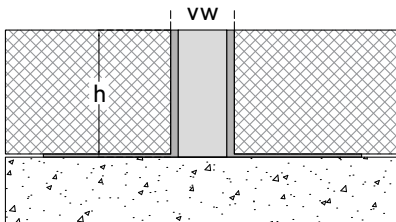
Standard version	Height h [mm]	Visible Width vw [mm]	Standard Length l [meter]
MTMTFA-10-10	10	10	2.44
MTMTFA-10-12.5	12.5	10	2.44
MTMTFA-10-15	15	10	2.44
MTMTFA-10-20	20	10	2.44
MTMTFA-10-25	25	10	2.44
MTMTFA-10-30	30	10	2.44
MTMTFA-10-50	50	10	2.44

Material Options

- Extruded Aluminum
- Insert Rubber

Finish Options

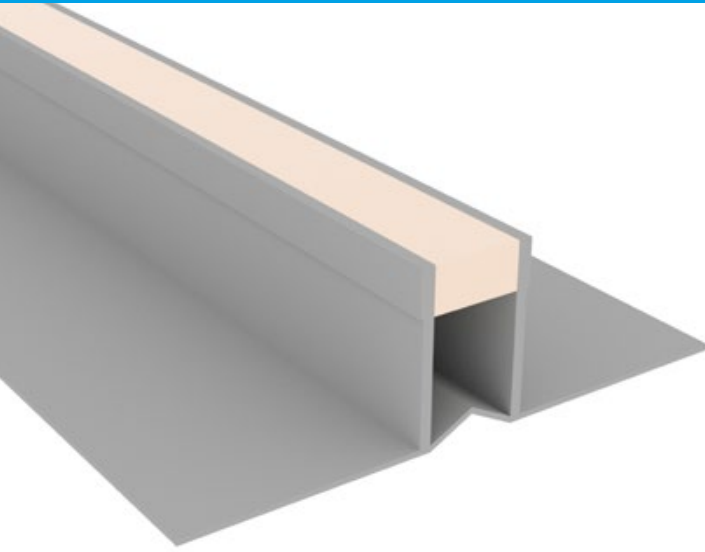
- Rubber insert available in different colors



Standard color range

- | | | | | |
|----------------|-----------------|----------------|----------------|----------------|
| M Black - 1101 | M Grey - 1301 | M Grey - 2302 | M Grey - 5365 | M Grey - 5305 |
| M Grey - 9369 | M White - 2512 | M Grey - 6366 | M Beige - 1971 | M Beige - 5975 |
| M Beige - 6954 | M Beige - 11011 | M Beige - 1901 | | |

Actual finish might vary from the illustration. If required, colour sample will be provided for approval.



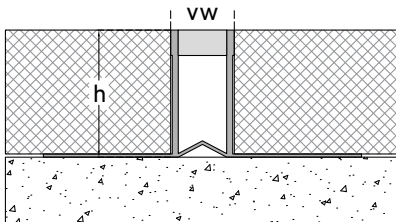
- 1 Tile movement joints with PVC infill
- 2 Highly durable
- 3 Easy to install

Standard version	Height h [mm]	Visible Width vw [mm]	Standard Length l [meter]
MTMTEFP-10-10	10	10	2.7
MTMTEFP-10-12.5	12.5	10	2.7
MTMTEFP-10-15	15	10	2.7
MTMTEFP-10-20	20	10	2.7
MTMTEFP-10-25	25	10	2.7














Material Options

- PVC Tile Trims

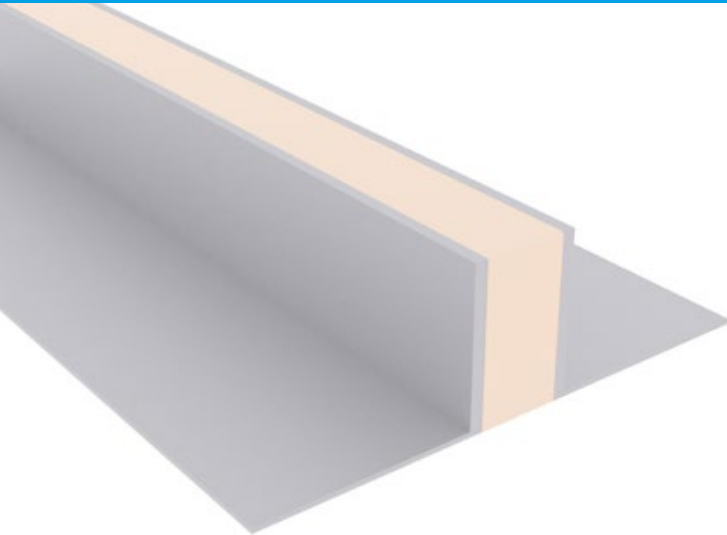
T Shape



Standard color range

- | | | | | |
|---|---|--|--|--|
|  M Black - 1101 |  M Grey - 1301 |  M Grey - 2302 |  M Grey - 5365 |  M Grey - 5305 |
|  M Grey - 9369 |  M White - 2512 |  M Grey - 6366 |  M Beige - 1971 |  M Beige - 5975 |
|  M Beige - 6954 |  M Beige - 11011 |  M Beige - 1901 | | |

Actual finish might vary from the illustration. If required, colour sample will be provided for approval.



- 1 Tile movement joints with rubber insert
- 2 Highly durable
- 3 Easy to install

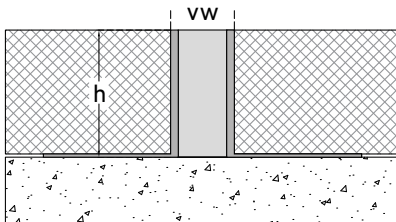
Standard version	Height h [mm]	Visible Width vw [mm]	Standard Length l [meter]
MTMTFS-10-10	10	10	2.44
MTMTFS-10-12.5	12.5	10	2.44
MTMTFS-10-15	15	10	2.44
MTMTFS-10-20	20	10	2.44
MTMTFS-10-25	25	10	2.44
MTMTFS-10-30	30	10	2.44
MTMTFS-10-50	50	10	2.44

Material Options

- Stainless Steel 304, 316, 316L finish

Finish Options

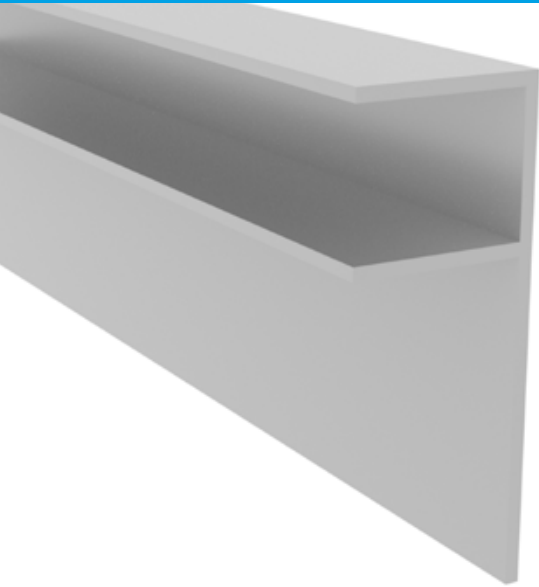
- Rubber insert available in different colors



Standard color range

- | | | | | |
|----------------|-----------------|----------------|----------------|----------------|
| M Black - 1101 | M Grey - 1301 | M Grey - 2302 | M Grey - 5365 | M Grey - 5305 |
| M Grey - 9369 | M White - 2512 | M Grey - 6366 | M Beige - 1971 | M Beige - 5975 |
| M Beige - 6954 | M Beige - 11011 | M Beige - 1901 | | |

Actual finish might vary from the illustration. If required, colour sample will be provided for approval.



- 1 Tile movement joints with PVC infill
- 2 Highly durable
- 3 Easy to install

Standard version	Height h [mm]	Visible Width vw [mm]	Standard Length l [meter]
MTFWA-8	8	10	2.7
MTFWA-10	10	10	2.7
MTFWA-12.5	12.5	10	2.7

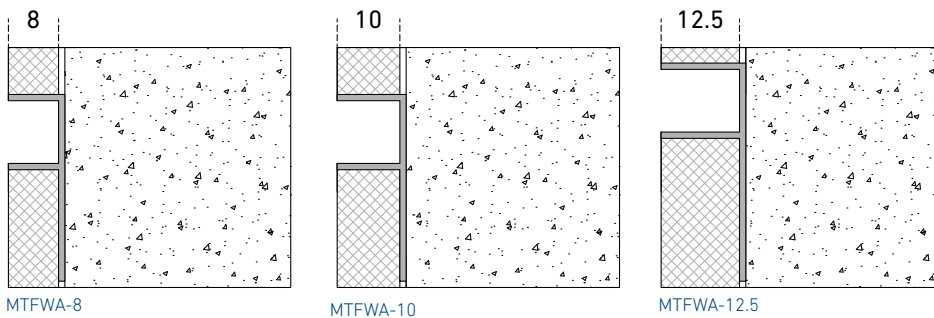
Material Options

- Extruded Aluminum

Finish Options

- Colored anodized
- Powder coat

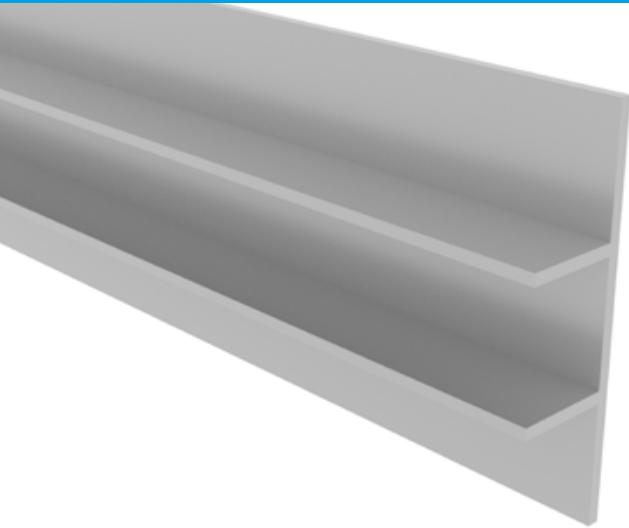
F Shape



Standard color range



Actual finish might vary from the illustration. If required, colour sample will be provided for approval.



- 1 Trim for walls
- 2 Highly durable
- 3 Easy to install

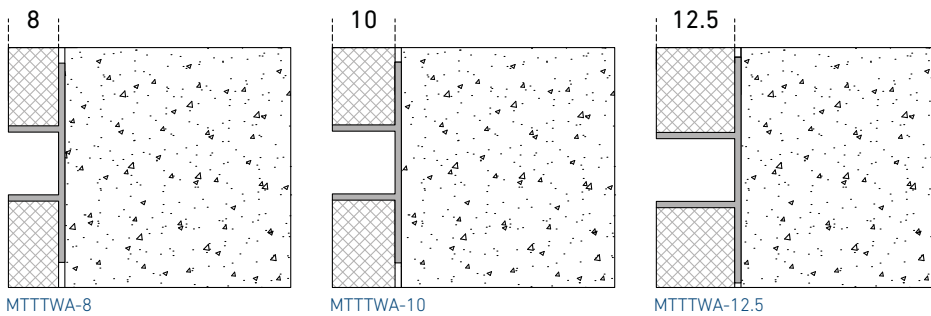
Standard version	Height h [mm]	Visible Width vw [mm]	Standard Length l [meter]
MTTTWA-8	8	10	2.7
MTTTWA-10	10	10	2.7
MTTTWA-12.5	12.5	10	2.7

Material Options

- Extruded Aluminum

Finish Options

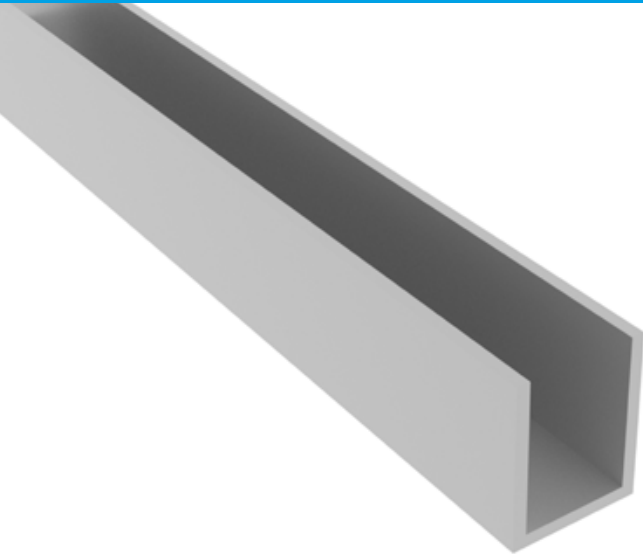
- Colored anodized
- Powder coat



Standard color range

- Matt Silver
- Polished Silver
- Champ Brush
- Bronze Matt
- Bronze Matt
- Matt Black
- Polish Bronze
- Polish Gold
- Matt Gold

Actual finish might vary from the illustration. If required, colour sample will be provided for approval.



- 1 Trim for walls
- 2 Highly durable
- 3 Easy to install

Comes with welded washer @350 mm with holes

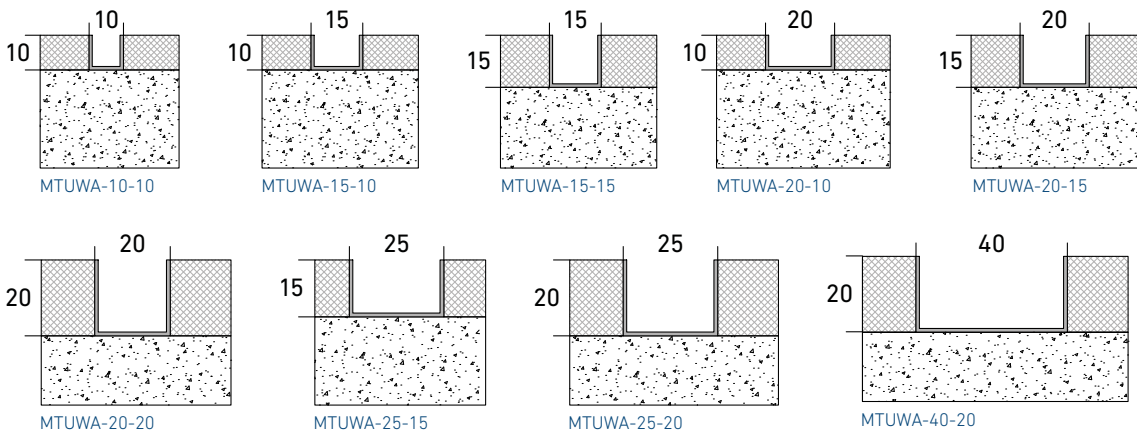
Standard version	Height h [mm]	Visible Width vw [mm]	Standard Length l [meter]
MTUWA-10-10	10	10	3
MTUWA-15-10	10	15	3
MTUWA-15-15	15	15	3
MTUWA-20-10	10	20	3
MTUWA-20-15	15	20	3
MTUWA-20-20	20	20	3
MTUWA-25-15	15	25	3
MTUWA-25-20	20	25	3
MTUWA-40-20	20	40	3

Material Options

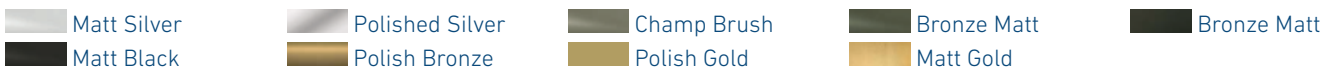
- Extruded Aluminum

Finish Options

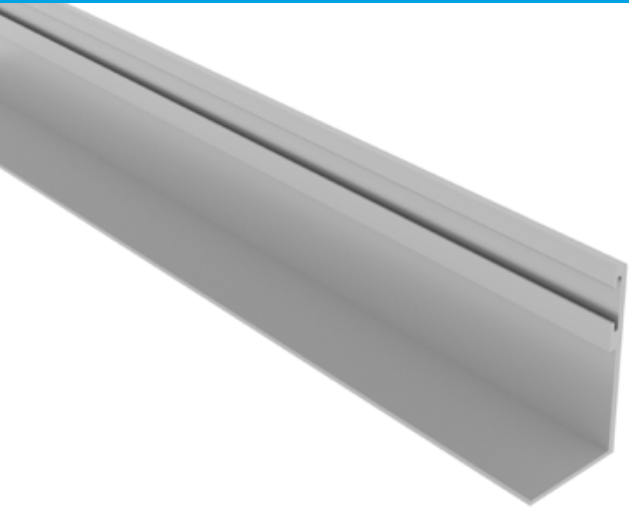
- Colored anodized
- Powder coat



Standard color range



Actual finish might vary from the illustration. If required, colour sample will be provided for approval.



- 1 Trim for floors
- 2 Highly durable
- 3 Easy to install

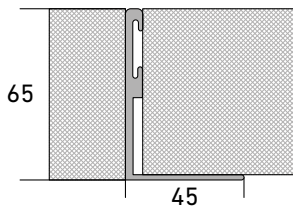
Standard version	Height h [mm]	Standard Length l [meter]
MTLGFA-65	65	2.7
MTLGFA-80	80	2.7
MTLGFA-100	100	2.7

Material Options

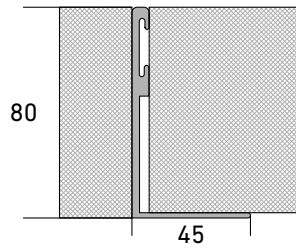
- Extruded Aluminum

Finish Options

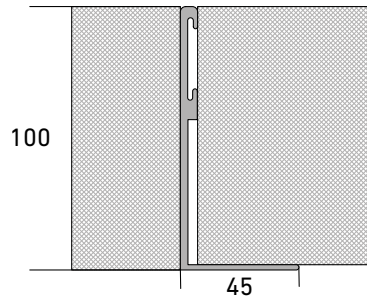
- Colored anodized



MTLGFA-65



MTLGFA-80



MTLGFA-100

Standard color range

- Matt Silver
- Polished Silver
- Champ Brush
- Bronze Matt
- Bronze Matt
- Matt Black
- Polish Bronze
- Polish Gold
- Matt Gold

Actual finish might vary from the illustration. If required, colour sample will be provided for approval.

LEGAL NOTES

All specifications in this catalogue, in particular the suggestions for processing and use of our products correspond to our current knowledge state. Despite the greatest possible care, we are not able to guarantee that the non-binding information is without errors.

Further, the installation details shown in this catalogue are theoretical in nature and do not represent real objects. We reserve the right to make technical changes.

The current version, which can either be requested by us or downloaded from www.migua.ae applies.

The texts and images are subject to copyright.

MIGUA Building Products Trading L.L.C

Palazzo Venezia, Wadi Al Safa 3, Office No. 101
PO Box No: 453696
Dubai, United Arab Emirates

Fon +971 4340 9771
Email salesme@migua.com
Web www.migua.ae

MIGUA Fugensysteme GmbH

Dieselstrasse 20
42489 Wuelfrath, Germany

Fon +49 2058 774 0
Fax +49 2058 774 48
Email info@migua.de
Web www.migua.com