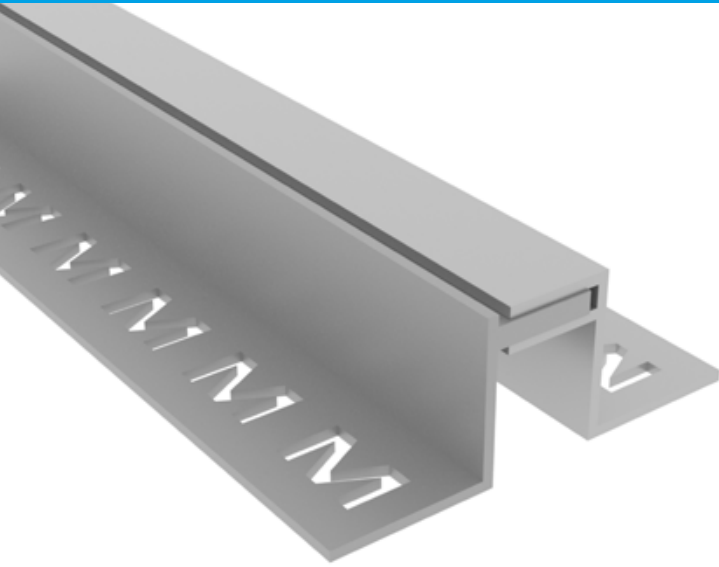


MTMFFA-12

TILE MOVEMENT JOINTS

MIGUTEC

TRIMS AND PROFILES



- 1 Tile Movement joints
- 2 Highly durable
- 3 Easy to install

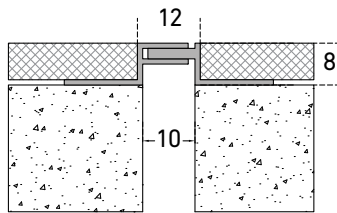
Standard version	Height h [mm]	Visible Width vw [mm]	Joint width [mm]	Total movement [mm]	Standard Length l [meter]
MTMFFA-12-8	8	12	10	4 (±2)	2.7
MTMFFA-12-10	10	12	10	4 (±2)	2.7
MTMFFA-12-15	15	12	10	4 (±2)	2.7
MTMFFA-12-20	20	12	10	4 (±2)	2.7
MTMFFA-12-25	8	12	10	4 (±2)	2.7

Material Options

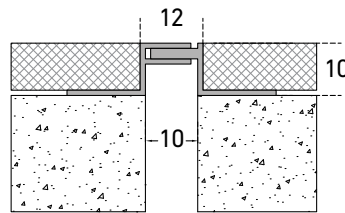
- Extruded Aluminum

Finish Options

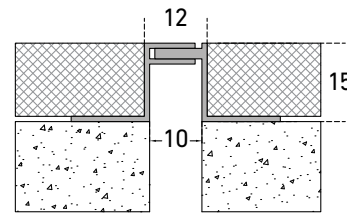
- Colored anodized



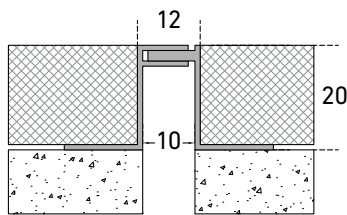
MTMFFA-12-8



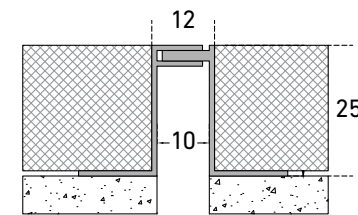
MTMFFA-12-10



MTMFFA-12-15



MTMFFA-12-20



MTMFFA-12-25

Standard color range

- Matt Silver
- Polished Silver
- Champ Brush
- Bronze Matt
- Bronze Matt
- Matt Black
- Polish Bronze
- Polish Gold
- Matt Gold

Actual finish might vary from the illustration. If required, colour sample will be provided for approval.